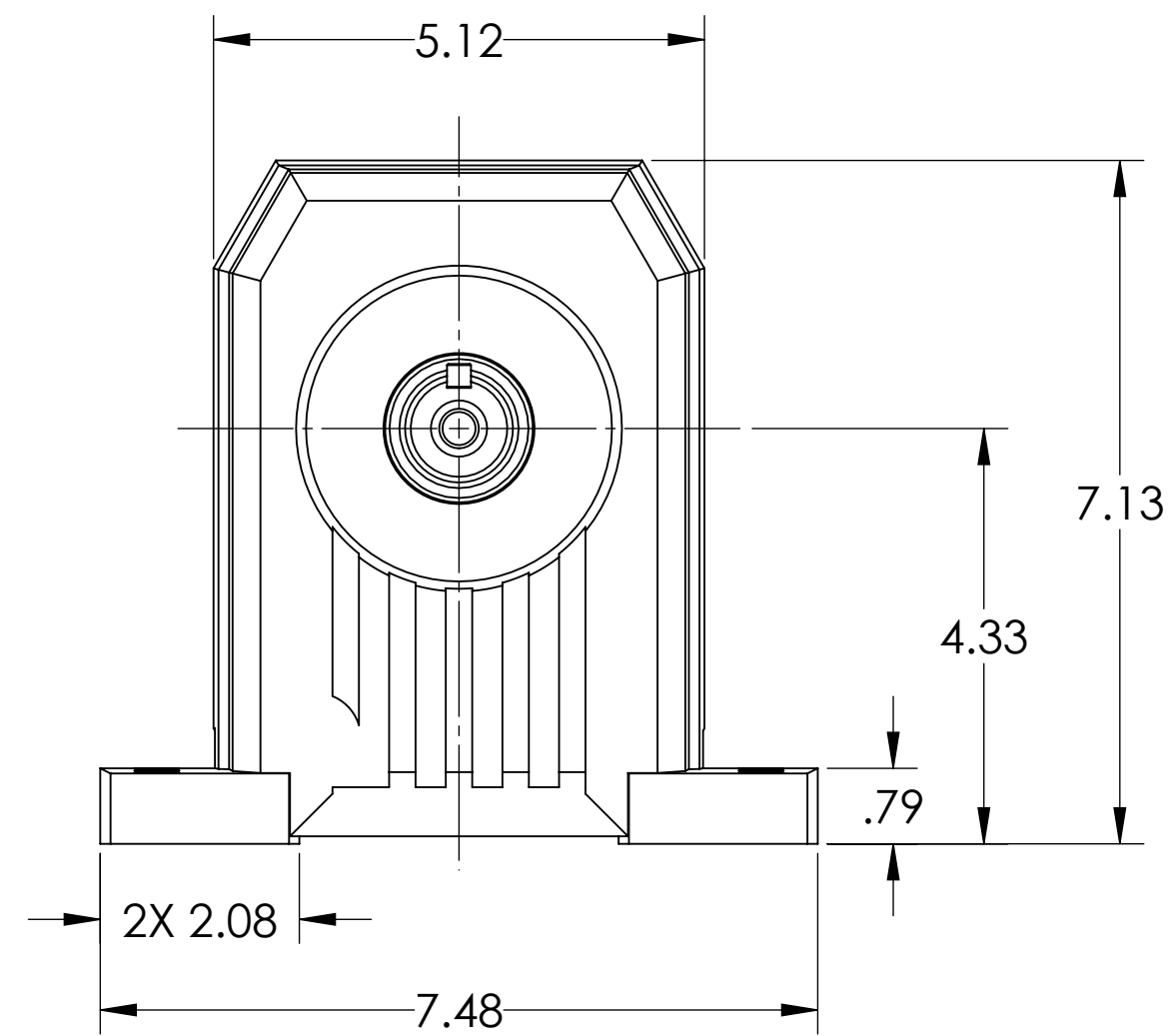
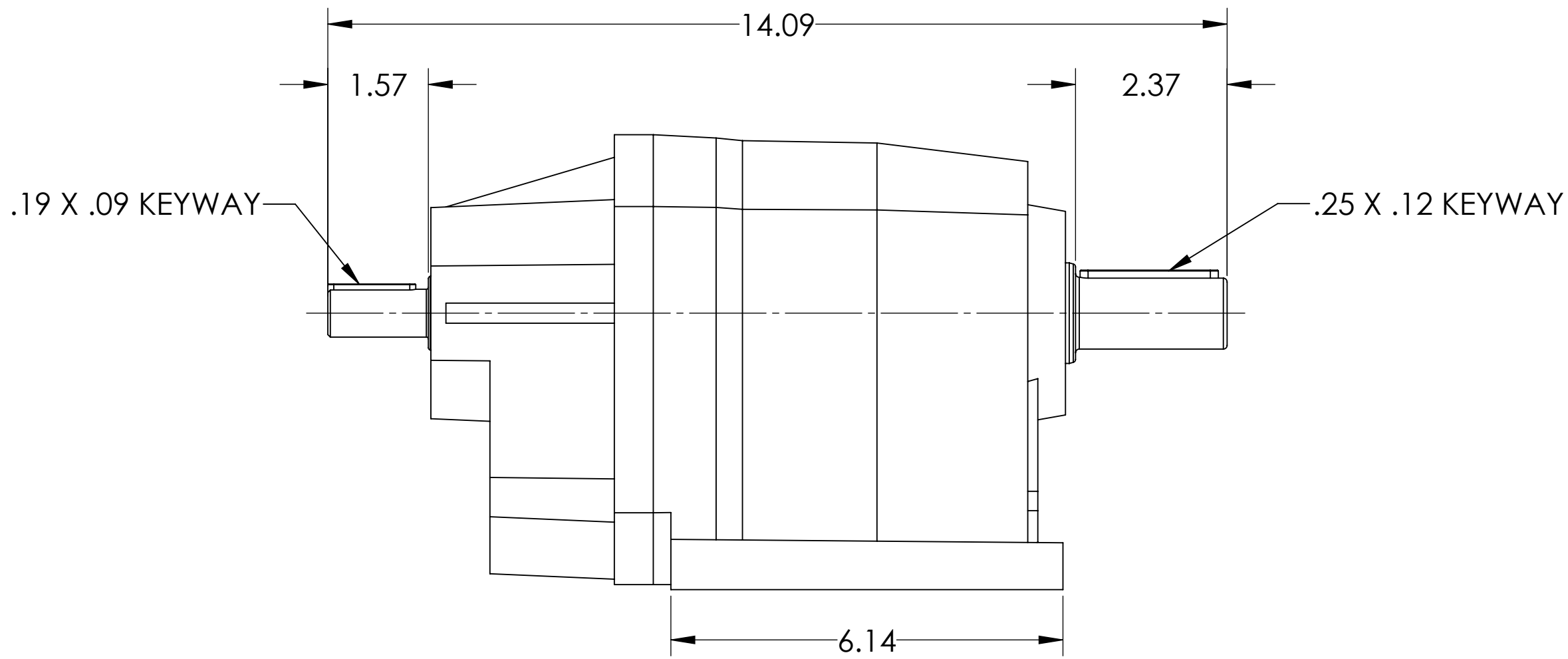
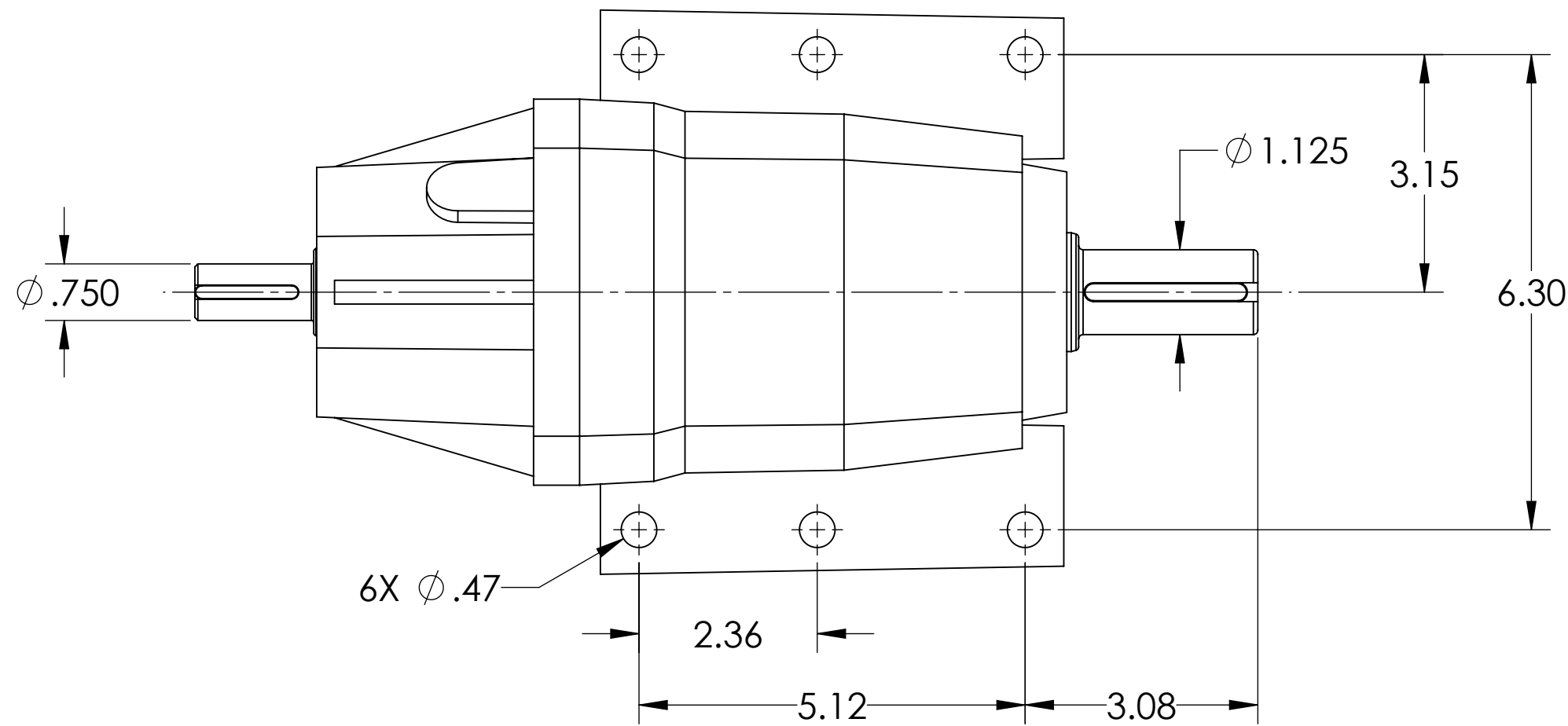


REVISIONS			
REV.	DESCRIPTION	ECN	DATE
B.0	1. CONVERTED FROM ME10		4/8/2011



USE AND RELATED INFORMATION
MATERIAL: ES 11.999
WAS:

----- UNLESS OTHERWISE SPECIFIED -----
 DIMENSIONS ARE IN **INCHES**.
 INTERPRET DIM AND TOLERANCES PER VIKING PUMP ES-47
 BREAK EDGES .005-.015 RADIUS OR CHAMFER
 .XX ± .02 .XXX ± .005 ANGLES ± 1°
 ALL FINISHED SURFACES $\sqrt{250}$ (AA .030 CUTOFF)
 ACCEPTABILITY OF SCREW THREADS SHALL BE
 DETERMINED BASED ON SYSTEM 21 ASME B1.3

THIRD ANGLE PROJECTION

STATE	Released	05/06/2014
DRAWN	jpierce	5/6/2014
CHECKED	JAG	05/06/2014
PROJECT	3D	WEIGHT: 24.00LBS
SCALE: 1:2		
CASTING NUMBER		

VIKING PUMP VIKING PUMP, INC.
 A Unit of IDEX Corporation
 Cedar Falls, IA 50613
 U.S.A.

THIS DRAWING IS THE PROPERTY OF VIKING PUMP, INC. AND IS PROPRIETARY IN GENERAL AND DETAIL. IT SHALL NOT BE COPIED OR ITS CONTENTS REVEALED TO OUTSIDE PARTIES WITHOUT THE WRITTEN CONSENT OF VIKING PUMP, INC.

SIZE 32 SOLID SHAFT INLINE REDUCER

SIZE	DWG. NO.	SHEET 1 OF 1	REV
C	3-551-320-000-00		A.0