

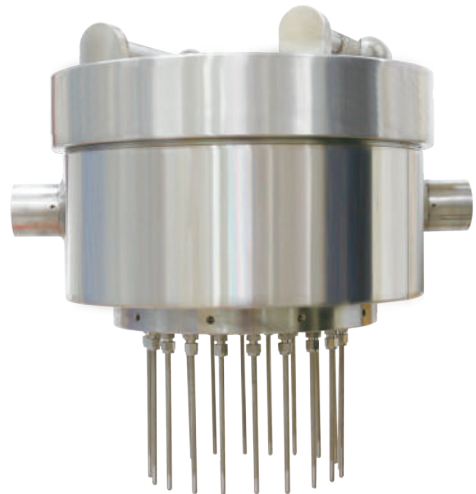
Cool-down and leak detector

Model : R190 (RL series)

Spec. sheet no. RD01-03

Service intended

R190 series are explosion proof temperature sensors with a high accuracy and a high reliability for cryogenic industries such as LNG tank terminal and oxygen generator. The temperature sensors are available as RTD depending on the usage, and it can be designed according to user's request. Furthermore, these sensors can be manufactured according to the requested specification of flange or thread for required measuring points.



Standard features

Junction box

316SS

Temperature range

-200 ~ 100°C

Explosion proof

Ex d IIC T6 (IP65)

Maximum measuring points

15 point

Element

Pt 100Ω at 0°C

Tolerances on temperature reading

Class A : $\pm (0.15 + 0.002 | t |)$

Class B : $\pm (0.3 + 0.005 | t |)$

Sheath material

316L SS

Sheath outer diameter

3.2, 4.8 and 6.4 mm

Main order

Ordering information

1. Base model

R190 Cool-down and leak detector

2. Head type

H Explosion proof
Z Other

3. Element

Q Pt 100Ω (B)
9 Pt 100Ω (A)

4. Sheath material

1 316SS
9 Other

5. Sheath outer diameter (mm)

D 3.2
E 4.8
F 6.4

6. Measuring point

01 1
02 2
03 3
04 4
05 5
06 6
07 7
08 8
09 9
10 10
11 11
12 12
13 13
14 14
15 15

7. Conduit connection

1 ½" PF
2 ½" PT
3 ½" NPT
4 ¾" PF
5 ¾" PT
6 ¾" NPT
9 Other

8. Connection type

XX Refer to insert length table (12th and 13th character)

9. Insert length

X Refer to insert length table (14th character)

10. Option

0 None
1 Accessories

1	2	3	4	5	6	7	8	9	10
R190	H	Q	1	F	12	1	XX	X	1

Sample
ordering code

Mounting, connection type and insert length table - 12th thru 14th characters

12 th character		13 th character		14 th character	
Code	Connection size and connector material	Code	Connection type	Code	Insert length (mm)
A	None	A	None	A	100 mm
B	1/8" and 304SS	B	PT	B	200 mm
C	1/4" and 304SS	C	NPT	C	300 mm
D	3/8" and 304SS	D	PF	D	400 mm
E	1/2" and 304SS	E	NPS	E	500 mm
F	3/4" and 304SS	F	UNF	F	600 mm
G	1" and 304SS	G	BSPT	G	700 mm
H	1 1/4" and 304SS	H	BSPF	H	800 mm
J	1 1/2" and 304SS	J	MM	J	900 mm
K	2" and 304SS	K	ANSI 150 Lb RF	K	1,000 mm
L	3" and 304SS	L	ANSI 150 Lb FF	L	1,500 mm
M	7/16" and 304SS	M	ANSI 300 Lb RF	M	2,000 mm
N	1/2" and 316SS	N	ANSI 300 Lb FF	N	2,500 mm
P	1/4" and 316SS	O	Sanitary	P	3,000 mm
Q	3/8" and 316SS	P	ANSI 600 Lb RF	Q	3,500 mm
R	1/2" and 316SS	Q	ANSI 600 Lb FF	R	4,000 mm
S	3/4" and 316SS	R	JIS 5K RF	S	4,500 mm
T	1" and 316SS	S	JIS 5K FF	T	5,000 mm
U	1 1/4" and 316SS	T	JIS 10K RF	U	6,000 mm
V	1 1/2" and 316SS	U	JIS 10K FF	V	7,000 mm
W	2" and 316SS	V	JIS 20K RF	W	8,000 mm
X	3" and 316SS	W	JIS 20K FF	X	9,000 mm
Y	7/16" and 316SS	X	ANSI 1,500 Lb RTJ	Y	10,000 mm
Z	Other	Y	ANSI 2,500 Lb RTJ	Z	Other
		Z	Other		

- Note for 14th character, please choose a code of next higher length if applicable length is not. Actual length shall be specified.

R190 : Standard product drawing

