

# Ultra high purity pressure gauge with transmitter

## Model: PT840 series

Spec. sheet no. PD08-05

### Service intended

PT840 series are specially designed for the ultra-high purity gas distribution system used in a semiconductor, electronic, medical, biotechnology and pharmaceutical industry.



### Nominal diameter

50 mm (2")

### Gauge accuracy

±1.0% of full scale

### Transmitter accuracy

±0.25% of full scale

### Scale range

Refer to range code

### Working pressure

Steady pressure : 75% of full scale value

Fluctuating pressure : 67% of full scale value

### Working temperature

Ambient : -40 ~ 65°C

Fluid : Max. 100°C

### Temperature effect

Accuracy at temperature above and below the reference temperature (20°C) will be effected by approximately ±0.4% per 10°C of full scale



## Standard features

### Mechanical

#### Pressure connection

Type 316L SS electropolished  
low mount or center back mount  
surface finish  $Ra \leq 0.25 \mu m$

- 1/4" NPT male thread
- VCR® male or female face seal fitting

#### Element

Type 316L SS  
<6 MPa : C-type bourdon tube  
≥6 MPa : Helical type bourdon tube

#### Case

Type 304SS, Electropolished with pressure relief

#### Movement

Stainless steel

#### Dial

White PVC with pointer stop pin  
With black/red lettering, dual pressure scale (bar/psi)

#### Pointer

Black painted aluminium alloy

#### Ring and window

Twist-lock polycarbonate

#### Helium leak rate

Tested to confirm leakage rates of less than  
 $10^{-9} \text{ mbar} \cdot \ell / \text{sec}$

### Electrical

#### Connection

26 AWG, Teflon insulated  
10 feet leads (2 black wires)

#### Power

DC 24 V

#### Out put

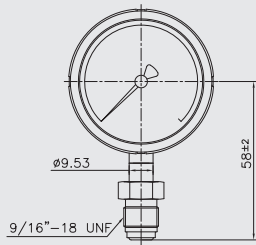
4 ~ 20 mA, 2 wire system

**1. Base model****PT840** Ultra high purity pressure gauge with transmitter**2. Nominal diameter****1** 50 mm (2")**3. Type of mounting****A** Low mount (LM)**4. Accuracy****3** 1.0 class**5. Connection type****CD** ¼" NPT (male)**SF** Swivel female face seal**SM** Swivel male face seal**6. Unit****H** bar**I** MPa**7. Range****048** 0 ~ 11 bar**016** -1 ~ 11 bar**012** -1 ~ 7 bar**009** -1 ~ 4 bar**8. Pressure connection material and dial color****4** 316L SS and 2 colors**8** 316L SS and 3 colors**9. Option****0** Standard**1** Accessories

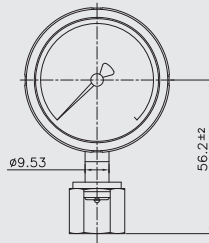
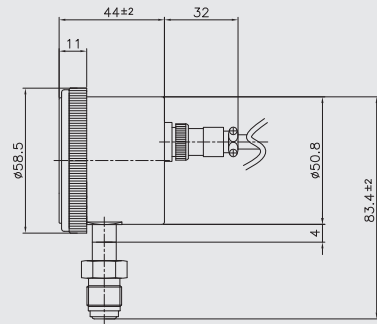
1	2	3	4	5	6	7	8	9
PT840	1	A	3	CD	H	XXX	4	0

Sample  
ordering code

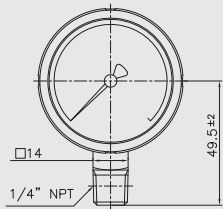
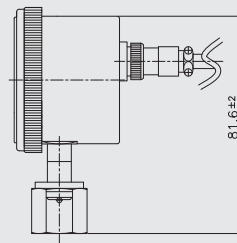
## PT840 : Type of mounting



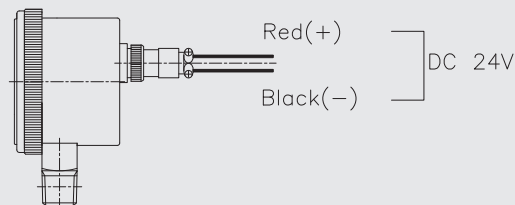
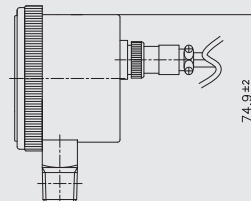
Swivel male



Swivel female



NPT male



Wire connection

Blank memo area for writing.