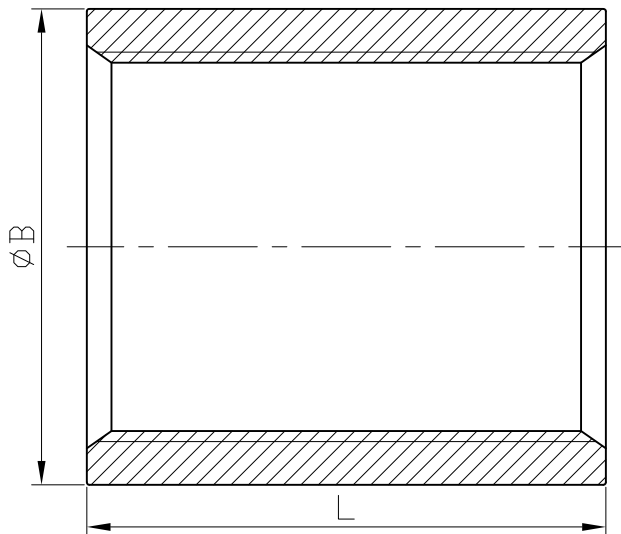


Full Coupling



0.1	± 0.1	Ra
0.2	± 0.2	▽
1.6	± 0.3	▽
6.3	± 0.5	▽
25	± 0.8	▽
0.5~5	321~1000	JIS
6~30	121~320	
31~120	31~120	
121~320	121~320	
321~1000	321~1000	
GENERAL TOLERANCE		

DN	6	8	10	15	20	25	32	40	50	65	80	100
B	13.5	17	20.5	25	30.5	38	47	53.5	66	83	96.5	122.5
L	18	25	26	33	36	42	46	46	55	64	70	82

unit:mm

NPS	1/8"	1/4"	3/8"	1/2"	3/4"	1"	1-1/4"	1-1/2"	2"	2-1/2"	3"	4"
B	0.53	0.67	0.81	0.98	1.2	1.5	1.85	2.11	2.6	3.27	3.8	4.82
L	0.71	0.98	1.02	1.3	1.42	1.65	1.81	1.81	2.17	2.52	2.76	3.23

unit:in

Tolerance : ±0.5mm(1/8"~2")
±0.8mm(2-1/2"~4")

*ISO 4144

HAITIMA CORPORATION
P.O.BOX 34-36 TAIPEI
Tel:+886-2-26585800

E-mail:haitima@seed.net.tw
www.haitima.com.tw
TAIWAN R.O.C.
Fax:+886-2-26582266



HAITIMA CORPORATION

CHECK BY	DRAWING BY	DATE	SPECIFICATION	Full Coupling			
	Yuan	Aug.17.2015	MATERIAL	304/316			
			PROCESS/Nr.				
			UNIT / SCALE	mm			
			Revise	Description	Date	Approve	
			DRAWING NO.		122-00		-15