

WELD FITTINGS

Weld to the ASTM A270 tubing



Removal from the system is not required
EACH FITTINGS PACKAGING HAS A BARCODE

Catalog

Table of Contents page 27—42



Weld Fittings

Product Description&Specification 27

Elbows

2WK	5109	28
L2KS	5110	28
2WCL	5111	28
L2S	5112	29
2WU	5119	32
Polished 12"	5126	34
Polished 18"	5127	35
Polished 24"	5128	35
Polished 36"	5129	35
	5136	38
	5137	39
2S	5138	40
2CMW	5139	40
2KS	5140	40
2KMW	5141	41

Tees

7WWW	5113	29
7W	5114	29
7RW	5115	30
7RWWW	5120	32
28WA	5122	33
28WB	5123	33

Crosses

9WWW	5118	30
9W	5121	33

Adapters

14WHR	5124	34
14WHRL	5125	34
19WB	5130	36
22WB	5131	36

Cap

16W	5132	36
-----	------	----

Stub End

14WA	5133	37
------	------	----

Flanges

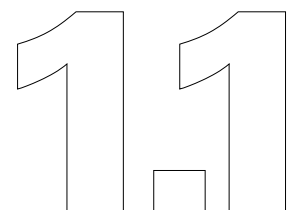
38SL	5134	37
38W	5135	37

Tube Hanger

	5143	42
	5144	42

Reducers

31W	5117	31
32W	5118	31
31	5142	41



WELD FITTINGS....

Weld fittings give processors the highest degree of corrosion resistance and sanitation available. Their streamlined design, flush joints and butt-weld assembly provides full, unrestricted flow for truly hygienic, permanent welded systems.



GEMO Weld Fittings meet



requirements

WELD FITTINGS SPECIFICATIONS....

- Size Range: 1/2" OD through 12" OD
- Materials: T304, T316L
- Surface Finish:
 - Mechanically Polished
 - Internal 20Ra (0.51µm), External 32Ra (0.8µm)
 - No. 7 - ID & OD
 - No. 5 - OD only
 - No. 3 - ID only
 - No. 1 - unpolished
 - Custom - built upon request

ORDERING SPECIFICATIONS....

- Specify:
- Description
 - Item No.
 - Size
 - Material
 - Surface Polish Requirements
 - Quantity

Example

Description	Item No	Size	Material	Surface	Quantity
2WK bend	5109	2"	T304	NO.7	200

NOTES THE DIMENSION TABLES

- All Dimensions are in inch and mm.
- Wall Thickness: Fittings 1.0"-3.0" sizes are manufactured with 16 gauge (0.065") wall thickness. The 4.0" tube size is manufactured with 14 gauge (0.083") wall thickness.

Weld Fittings

Part for ASTM A270 tubes

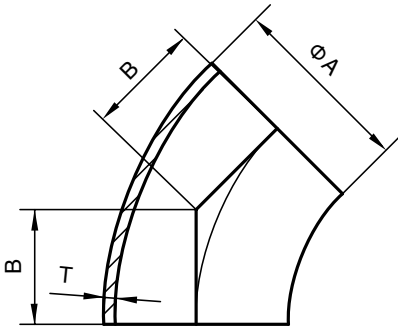


TUBES AND FITTINGS GEMO

Finish: OD: Semi bright. ID: Mirror
Connections: Welding ends

1.1

2WK
Bend 45°, No Tangent

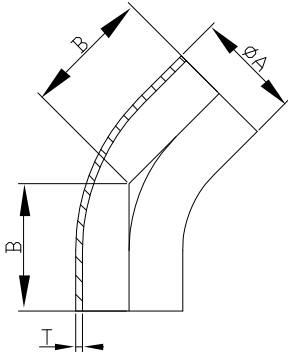


Basic Ordering Number: 5109

NO,	Size	A		B		T	
		inch	mm	inch	mm	inch	mm
5109 0100	1.0"	1.000	25.4	0.625	15.8	0.065	1.65
5109 0150	1.5"	1.500	38.1	0.937	23.8	0.065	1.65
5109 0200	2.0"	2.000	50.8	1.250	31.7	0.065	1.65
5109 0250	2.5"	2.500	63.5	1.562	39.6	0.065	1.65
5109 0300	3.0"	3.000	76.2	1.875	47.6	0.065	1.65
5109 0400	4.0"	4.000	101.6	2.500	63.5	0.083	2.11

**T304 and T316L are available.

L2KS
Polished Long Elbow 45 Degree
With Tangent

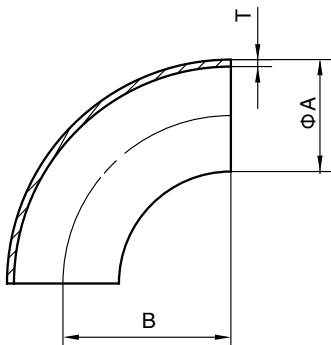


Basic Ordering Number: 5110

NO.	Size	A		B		T	
		inch	mm	inch	mm	inch	mm
5110 0100	1.0"	1.000	25.4	1.189	30.2	0.065	1.65
5110 0150	1.5"	1.500	38.1	1.626	41.3	0.065	1.65
5110 0200	2.0"	2.000	50.8	2.311	58.7	0.065	1.65
5110 0250	2.5"	2.500	63.5	3.000	76.2	0.065	1.65
5110 0300	3.0"	3.000	76.2	3.689	93.7	0.065	1.65
5110 0400	4.0"	4.000	101.6	4.811	122.2	0.083	2.11

**T304 and T316L are available.

2WCL
Elbow 90°, No Tangent



Basic Ordering Number: 5111

NO.	Size	A		B		T	
		inch	mm	inch	mm	inch	mm
5111 0100	1.0"	1.000	25.4	1.500	38.1	0.065	1.65
5111 0150	1.5"	1.500	38.1	2.252	57.2	0.065	1.65
5111 0200	2.0"	2.000	50.8	3.000	76.2	0.065	1.65
5111 0250	2.5"	2.500	63.5	3.750	95.25	0.065	1.65
5111 0300	3.0"	3.000	76.2	4.500	114.3	0.065	1.65
5111 0400	4.0"	4.000	101.6	6.000	152.4	0.083	2.11

**T304 and T316L are available.

NOTE! Treatment: Annealed.

**All measurements are in millimeters (mm)
Conversion to inches, 25.4mm=1inch

Weld Fittings

Part for ASTM A270 tubes

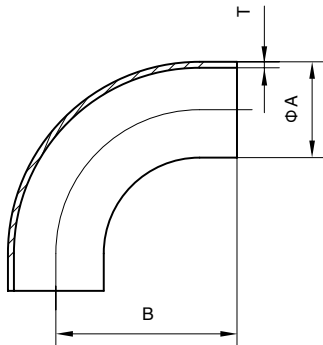


TUBES AND FITTINGS GEMO

Finish: OD: Semi bright. ID: Mirror
Connections: Welding ends

1.1

L2S Long Elbow 90 Degree, With Tangent

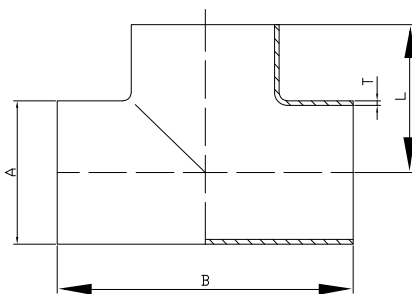


Basic Ordering Number: 5112

NO.	Size	A		B		T	
		inch	mm	inch	mm	inch	mm
5112 0100	1.0"	1.000	25.4	2.063	52.4	0.065	1.65
5112 0150	1.5"	1.500	38.1	2.937	74.6	0.065	1.65
5112 0200	2.0"	2.000	50.8	4.063	103.2	0.065	1.65
5112 0250	2.5"	2.500	63.5	5.189	131.8	0.065	1.65
5112 0300	3.0"	3.000	76.2	6.311	160.3	0.065	1.65
5112 0400	4.0"	4.000	101.6	8.311	211.1	0.083	2.11

**T304 and T316L are available.

7WWW Short Equal Tee, No Tangent

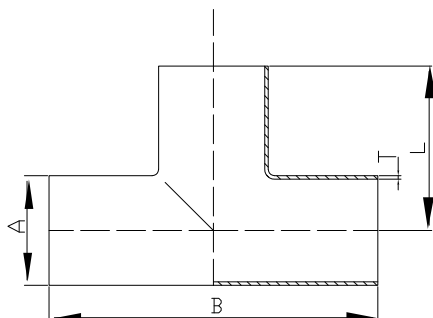


Basic Ordering Number: 5113

NO.	Size	A		B		L		T	
		inch	mm	inch	mm	inch	mm	inch	mm
5113 0100	1.0"	1.000	25.4	2.252	57.2	1.126	28.6	0.065	1.65
5113 0150	1.5"	1.500	38.1	3.315	84.2	1.657	42.1	0.065	1.65
5113 0200	2.0"	2.000	50.8	4.126	104.8	2.063	52.4	0.065	1.65
5113 0250	2.5"	2.500	63.5	4.685	119.0	2.343	59.5	0.065	1.65
5113 0300	3.0"	3.000	76.2	5.189	131.8	2.594	65.9	0.065	1.65
5113 0400	4.0"	4.000	101.6	6.874	174.6	3.437	87.3	0.083	2.11

**T304 and T316L are available.

7W Long Equal Tee, With Tangent



Basic Ordering Number: 5114

NO.	Size	A		B		L		T	
		inch	mm	inch	mm	inch	mm	inch	mm
5114 0100	1.0"	1.000	25.4	3.748	95.2	1.874	47.6	0.065	1.65
5114 0150	1.5"	1.500	38.1	4.500	114.3	2.252	57.2	0.065	1.65
5114 0200	2.0"	2.000	50.8	6.000	152.4	3.000	76.2	0.065	1.65
5114 0250	2.5"	2.500	63.5	6.000	152.4	3.000	76.2	0.065	1.65
5114 0300	3.0"	3.000	76.2	6.504	165.2	3.252	82.6	0.065	1.65
5114 0400	4.0"	4.000	101.6	7.748	196.8	3.874	98.4	0.083	2.11

**T304 and T316L are available.

**All measurements are in millimeters (mm)
Conversion to inches, 25.4mm=1inch

Weld Fittings

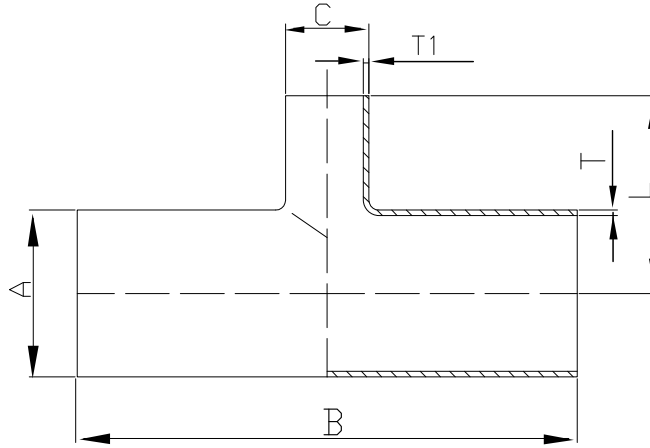
Part for ASTM A270 tubes

Finish: OD: Semi bright. ID: Mirror
Connections: Welding ends



1.1

7RW Long Reducing Tee

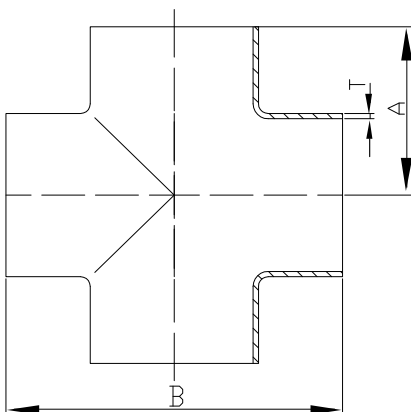


Basic Ordering Number: 5115

NO.	Size	A		C		B		L		T		T1	
		inch	mm	inch	mm	inch	mm	inch	mm	inch	mm	inch	mm
5115 01510	1.5"×1.0"	1.500	38.1	1.000	25.4	4.500	114.3	2.125	54.0	0.065	1.65	0.065	1.65
5115 02010	2.0"×1.0"	2.000	50.8	1.000	25.4	6.000	152.4	2.374	60.3	0.065	1.65	0.065	1.65
5115 02015	2.0"×1.5"	2.000	50.8	1.500	38.1	6.000	152.4	2.500	63.5	0.065	1.65	0.065	1.65
5115 02515	2.5"×1.5"	2.500	63.5	1.500	38.1	6.000	152.4	2.750	69.8	0.065	1.65	0.065	1.65
5115 02520	2.5"×2.0"	2.500	63.5	2.000	50.8	6.000	152.4	3.250	82.5	0.065	1.65	0.065	1.65
5115 03015	3.0"×1.5"	3.000	76.2	1.500	38.1	6.500	165.1	3.000	76.2	0.065	1.65	0.065	1.65
5115 03020	3.0"×2.0"	3.000	76.2	2.000	50.8	6.500	165.1	3.500	88.9	0.065	1.65	0.065	1.65
5115 03025	3.0"×2.5"	3.000	76.2	2.500	63.5	6.500	165.1	3.250	82.5	0.065	1.65	0.065	1.65
5115 04020	4.0"×2.0"	4.000	101.6	2.000	50.8	7.750	196.8	4.000	101.6	0.083	2.11	0.065	1.65
5115 04025	4.0"×2.5"	4.000	101.6	2.500	63.5	7.750	196.8	3.750	95.2	0.083	2.11	0.065	1.65
5115 04030	4.0"×3.0"	4.000	101.6	3.000	76.2	7.750	196.8	3.750	95.2	0.083	2.11	0.065	1.65

**T304 and T316L are available.

9WWWW Short Equal Cross



Basic Ordering Number: 5116

NO.	Size	B		A		T	
		inch	mm	inch	mm	inch	mm
5116 0100	1.0"	2.250	57.2	1.126	28.6	0.065	1.65
5116 0150	1.5"	3.312	84.2	1.657	42.1	0.065	1.65
5116 0200	2.0"	4.125	104.6	2.063	52.4	0.065	1.65
5116 0250	2.5"	4.687	119.0	2.343	59.5	0.065	1.65
5116 0300	3.0"	5.187	131.8	2.594	65.9	0.065	1.65
5116 0400	4.0"	6.875	174.6	3.437	87.3	0.083	2.11

**T304 and T316L are available.

NOTE! Treatment: Annealed.

**All measurements are in millimeters (mm)
Conversion to inches, 25.4mm=1inch

Weld Fittings

Part for ASTM A270 tubes

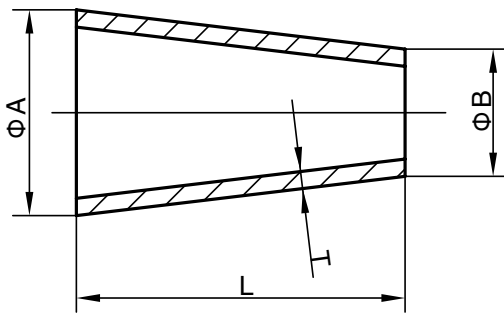


TUBES AND FITTINGS GEMO

Finish: OD: Semi bright. ID: Mirror
Connections: Welding ends

1.1

31W
Concentric Reducer
Butt Weld

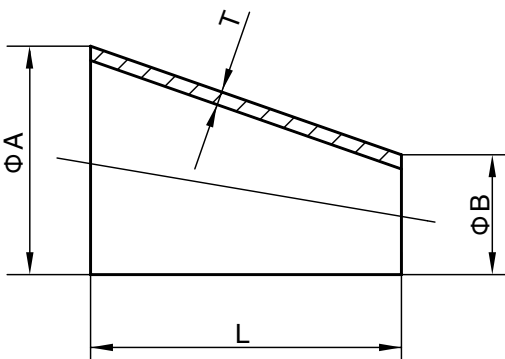


Basic Ordering Number: 5117

NO.	Size	A		B		L		T	
		inch	mm	inch	mm	inch	mm	inch	mm
5117 01510	1.5"×1.0"	1.500	38.1	1.000	25.4	2.000	50.8	0.065	1.65
5117 02010	2.0"×1.0"	2.000	50.8	1.000	25.4	4.000	101.6	0.065	1.65
5117 02015	2.0"×1.5"	2.000	50.8	1.500	38.1	2.000	50.8	0.065	1.65
5117 02510	2.5"×1.0"	2.500	63.5	1.000	25.4	6.000	152.4	0.065	1.65
5117 02515	2.5"×1.5"	2.500	63.5	1.500	38.1	4.000	101.6	0.065	1.65
5117 02520	2.5"×2.0"	2.500	63.5	2.000	50.8	2.000	50.8	0.065	1.65
5117 03010	3.0"×1.0"	3.000	76.2	1.000	25.4	8.000	203.2	0.065	1.65
5117 03015	3.0"×1.5"	3.000	76.2	1.500	38.1	6.000	152.4	0.065	1.65
5117 03020	3.0"×2.0"	3.000	76.2	2.000	50.8	4.000	101.6	0.065	1.65
5117 03025	3.0"×2.5"	3.000	76.2	2.500	63.5	2.000	50.8	0.065	1.65
5117 04015	4.0"×1.5"	4.000	101.6	1.500	38.1	10.000	254.0	0.083	2.11
5117 04020	4.0"×2.0"	4.000	101.6	2.000	50.8	8.000	203.2	0.083	2.11
5117 04025	4.0"×2.5"	4.000	101.6	2.500	63.5	6.000	152.4	0.083	2.11
5117 04030	4.0"×3.0"	4.000	101.6	3.000	76.2	4.000	101.6	0.083	2.11

**T304 and T316L are available.

32W
Eccentric Reducer
Butt Weld



Basic Ordering Number: 5118

NO.	Size	A		B		L		T	
		inch	mm	inch	mm	inch	mm	inch	mm
5118 01510	1.5"×1.0"	1.500	38.1	1.000	25.4	2.000	50.8	0.065	1.65
5118 02010	2.0"×1.0"	2.000	50.8	1.000	25.4	4.000	101.6	0.065	1.65
5118 02015	2.0"×1.5"	2.000	50.8	1.500	38.1	2.000	50.8	0.065	1.65
5118 02510	2.5"×1.0"	2.500	63.5	1.000	25.4	6.000	152.4	0.065	1.65
5118 02515	2.5"×1.5"	2.500	63.5	1.500	38.1	4.000	101.6	0.065	1.65
5118 02520	2.5"×2.0"	2.500	63.5	2.000	50.8	2.000	50.8	0.065	1.65
5118 03010	3.0"×1.0"	3.000	76.2	1.000	25.4	8.000	203.2	0.065	1.65
5118 03015	3.0"×1.5"	3.000	76.2	1.500	38.1	6.000	152.4	0.065	1.65
5118 03020	3.0"×2.0"	3.000	76.2	2.000	50.8	4.000	101.6	0.065	1.65
5118 03025	3.0"×2.5"	3.000	76.2	2.500	63.5	2.000	50.8	0.065	1.65
5118 04015	4.0"×1.5"	4.000	101.6	1.500	38.1	10.000	254.0	0.083	2.11
5118 04020	4.0"×2.0"	4.000	101.6	2.000	50.8	8.000	203.2	0.083	2.11
5118 04025	4.0"×2.5"	4.000	101.6	2.500	63.5	6.000	152.4	0.083	2.11
5118 04030	4.0"×3.0"	4.000	101.6	3.000	76.2	4.000	101.6	0.083	2.11

**T304 and T316L are available.

**All measurements are in millimeters (mm)
Conversion to inches, 25.4mm=1inch

Weld Fittings

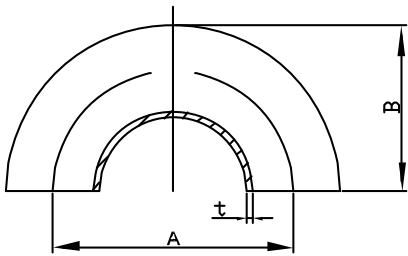
Part for ASTM A270 tubes

Finish: OD: Semi bright. ID: Mirror
Connections: Welding ends



2WU 180 Degree Return Bend Weld End

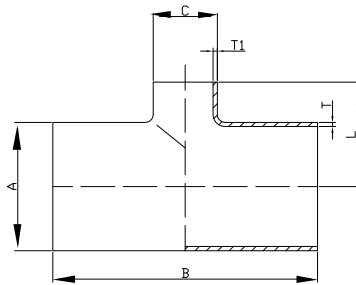
Basic Ordering Number: 5119



NO.	Size	A		B		t	
		inch	mm	inch	mm	inch	mm
5119 0100	1"	3	76.2	2	50.8	0.065	1.65
5119 0150	1.5"	4.5	114.3	3	76.2	0.065	1.65
5119 0200	2"	6	152.4	4	101.6	0.065	1.65
5119 0250	2.5"	7.5	190.5	5	127	0.065	1.65
5119 0300	3"	9	228.6	6	152.4	0.065	1.65
5119 0400	4"	12	304.8	8	203.2	0.083	2.11

**T304 and T316L are available.

7RWWW Short Reducing Tee



Basic Ordering Number: 5120

NO.	Size	A		B		C		t		t1	
		inch	mm	inch	mm	inch	mm	inch	mm	inch	mm
5120 01510	1.5"x1"	1.656	42.1	3.312	84.1	1.375	34.9	0.065	1.65	0.065	1.65
5120 02010	2"x1"	2.062	52.4	4.125	104.8	1.625	41.3	0.065	1.65	0.065	1.65
5120 02015	2"x1.5"	2.062	52.4	4.125	104.8	1.905	48.4	0.065	1.65	0.065	1.65
5120 02510	2.5"x1"	2.344	59.5	4.688	119.1	1.875	47.6	0.065	1.65	0.065	1.65
5120 02515	2.5"x1.5"	2.344	59.5	4.688	119.1	2.156	54.8	0.065	1.65	0.065	1.65
5120 02520	2.5"x2"	2.344	59.5	4.688	119.1	2.312	58.7	0.065	1.65	0.065	1.65
5120 03010	3"x1"	2.594	65.9	5.188	131.8	2.125	54.0	0.065	1.65	0.065	1.65
5120 03015	3"x1.5"	2.594	65.9	5.188	131.8	2.406	61.1	0.065	1.65	0.065	1.65
5120 03020	3"x2"	2.594	65.9	5.188	131.8	2.562	65.1	0.065	1.65	0.065	1.65
5120 03025	3"x2.5"	2.594	65.9	5.188	131.8	2.594	65.9	0.065	1.65	0.065	1.65
5120 04010	4"x1"	3.438	87.3	6.875	174.6	2.625	66.7	0.083	2.11	0.065	1.65
5120 04015	4"x1.5"	3.438	87.3	6.875	174.6	2.906	73.8	0.083	2.11	0.065	1.65
5120 04020	4"x2"	3.438	87.3	6.875	174.6	3.062	77.8	0.083	2.11	0.065	1.65
5120 04025	4"x2.5"	3.438	87.3	6.875	174.6	3.094	78.6	0.083	2.11	0.065	1.65
5120 04030	4"x3"	3.438	87.3	6.875	174.6	3.094	78.6	0.083	2.11	0.065	1.65
5120 06030	6"x3"	5.625	142.9	11.25	285.7	4.875	123.8	0.109	2.77	0.065	1.65
5120 06040	6"x4"	5.625	142.9	11.25	285.7	5.125	130.2	0.109	2.77	0.083	2.11
5120 08040	8"x4"	7	177.8	14	355.6	6.125	155.6	0.109	2.77	0.083	2.11
5120 08060	8"x6"	7	177.8	14	355.6	6.625	168.3	0.109	2.77	0.109	2.77

**T304 and T316L are available.

NOTE! Treatment: Annealed.

**All measurements are in millimeters (mm)
Conversion to inches, 25.4mm=1inch

Weld Fittings

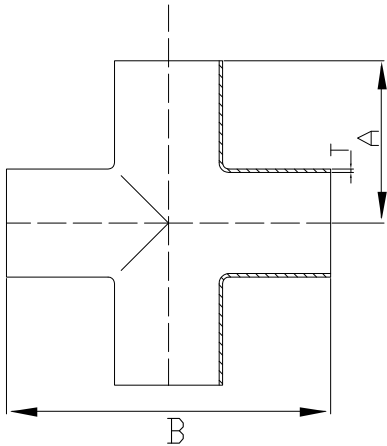
Part for ASTM A270 tubes

Finish: OD: Semi bright. ID: Mirror
Connections: Welding ends



1.1

9W
LONG EQUAL CROSS

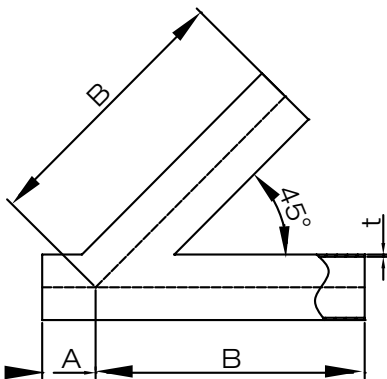


Basic Ordering Number: 5121

NO.	Size	A		B		t	
		inch	mm	inch	mm	inch	mm
5121 0100	1"	1.875	47.6	3.75	95.2	0.065	1.65
5121 0150	1.5"	2.25	57.1	4.5	114.3	0.065	1.65
5121 0200	2"	3	76.2	6	152.4	0.065	1.65
5121 0250	2.5"	3	76.2	6	152.4	0.065	1.65
5121 0300	3"	3.25	82.5	6.5	165.1	0.065	1.65
5121 0400	4"	3.875	98.4	7.75	196.8	0.083	2.11

**T304 and T316L are available.

28WA
45 Degree Butt Weld Lateral Wye

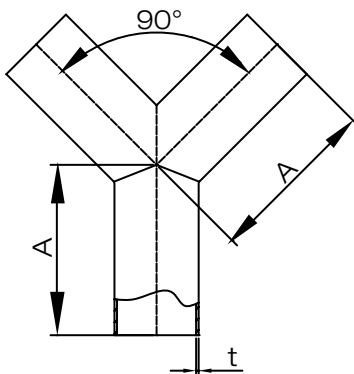


Basic Ordering Number: 5122

NO.	Size	A		B		t	
		inch	mm	inch	mm	inch	mm
5122 0100	1"	1	25.4	5	127	0.065	1.65
5122 0150	1.5"	1.188	30.2	6.188	157.2	0.065	1.65
5122 0200	2"	1.625	41.3	7.125	181.0	0.065	1.65
5122 0250	2.5"	1.5	38.1	8.5	215.9	0.065	1.65
5122 0300	3"	1.875	47.6	8.875	225.4	0.065	1.65
5122 0400	4"	2.015	51.2	10.75	273.0	0.083	2.11

**T304 and T316L are available.

28WB
True Wye Butt Weld Ends



Basic Ordering Number: 5123

NO.	Size	A		t	
		inch	mm	inch	mm
5123 0100	1"	3	76.2	0.065	1.65
5123 0150	1.5"	3	76.2	0.065	1.65
5123 0200	2"	4	101.6	0.065	1.65
5123 0250	2.5"	5	127	0.065	1.65
5123 0300	3"	6	152.4	0.065	1.65
5123 0400	4"	8	203.2	0.083	2.11
5123 0600	6"	8	203.2	0.109	2.77

**T304 and T316L are available.

**All measurements are in millimeters (mm)
Conversion to inches, 25.4mm=1inch

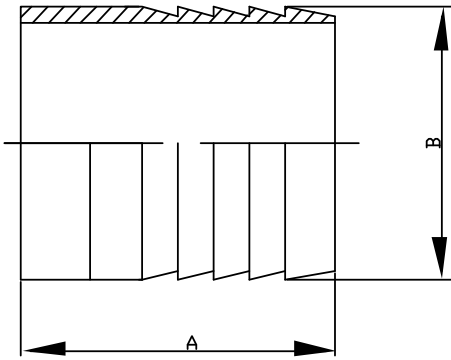
Weld Fittings

Part for ASTM A270 tubes



Finish: OD: Semi bright. ID: Mirror
Connections: Welding ends

14WHR Weld Hose Adapters

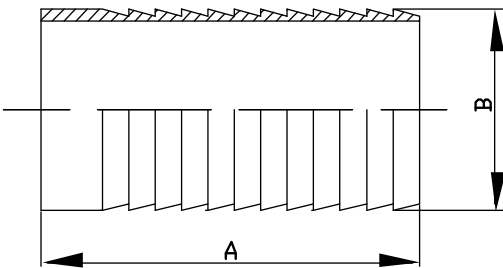


Basic Ordering Number: 5124

NO.	Size	A		B	
		inch	mm	inch	mm
5124 0050	0.5"	1.5	38.1	0.5	12.7
5124 0075	0.75"	1.5	38.1	0.75	19.05
5124 0100	1"	1.688	42.9	1	25.4
5124 0150	1.5"	1.688	42.9	1.5	38.1
5124 0200	2"	2.312	58.7	2	50.8
5124 0250	2.5"	2	50.8	2.5	63.5
5124 0300	3"	3.093	78.6	3	76.2
5124 0400	4"	3.406	86.5	4	101.6

**T304 and T316L are available.

14WHRL Long Weld Hose Adapters

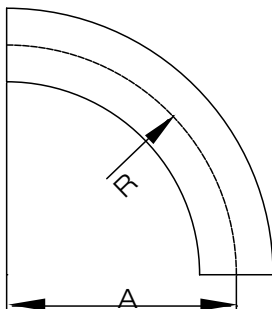


Basic Ordering Number: 5125

NO.	Size	A		B	
		inch	mm	inch	mm
5125 0100	1"	3	76.2	1.03	26.2
5125 0150	1.5"	4.5	114.3	1.53	38.9
5125 0200	2"	4.5	114.3	2.03	51.6
5125 0250	2.5"	5	127	2.53	64.2
5125 0300	3"	5	127	3.03	77.0
5125 0400	4"	4.875	123.825	4.03	102.4

**T304 and T316L are available.

Polished 12" 90°Weld Sweep ELbows-2SXL



Basic Ordering Number: 5126

NO.	Size	A		R	
		inch	mm	inch	mm
5126 0150	1.5"	12	304.8	12	304.8
5126 0200	2"	12	304.8	12	304.8
5126 0300	3"	12	304.8	12	304.8
5126 0400	4"	12	304.8	12	304.8

**T304 and T316L are available.

NOTE! Treatment: Annealed.

**All measurements are in millimeters (mm)
Conversion to inches, 25.4mm=1inch

Weld Fittings

Part for ASTM A270 tubes

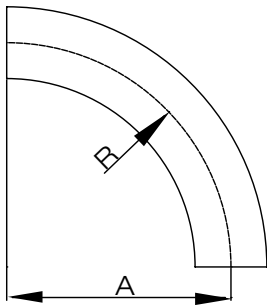


TUBES AND FITTINGS **GEMO**

Finish: OD: Semi bright. ID: Mirror
Connections: Welding ends

1.1

Polished 18"
90°Weld Sweep ELbows-2SXL

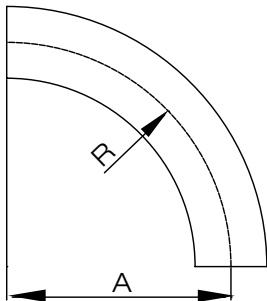


Basic Ordering Number: 5127

NO.	Size	A		R	
		inch	mm	inch	mm
5127 0150	1.5"	18	457.2	18	457.2
5127 0200	2"	18	457.2	18	457.2
5127 0250	2.5"	18	457.2	18	457.2
5127 0300	3"	18	457.2	18	457.2

**T304 and T316L are available.

Polished 24"
90°Weld Sweep ELbows-2SXL

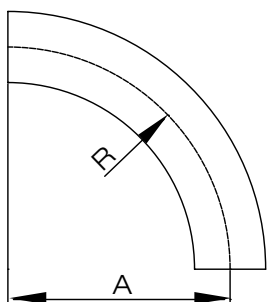


Basic Ordering Number: 5128

NO.	Size	A		R	
		inch	mm	inch	mm
5128 0150	1.5"	24	609.6	24	609.6
5128 0200	2"	24	609.6	24	609.6
5128 0250	2.5"	24	609.6	24	609.6
5128 0300	3"	24	609.6	24	609.6

**T304 and T316L are available.

Polished 36"
90°Weld Sweep ELbows-2SXL



Basic Ordering Number: 5129

NO.	Size	A		R	
		inch	mm	inch	mm
5129 0300	3"	36	914.4	36	914.4
5129 0400	4"	36	914.4	36	914.4

**T304 and T316L are available.

**All measurements are in millimeters (mm)
Conversion to inches, 25.4mm=1inch

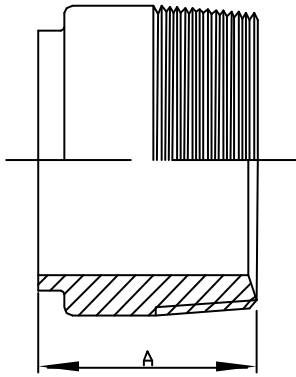
Weld Fittings

Part for ASTM A270 tubes



Finish: OD: Semi bright. ID: Mirror
Connections: Welding ends

19WB
Weld X Male NPT Adapter

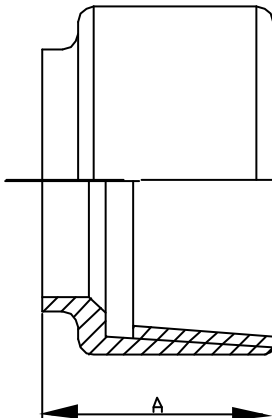


Basic Ordering Number: 5130

NO.	Size	A	
		inch	mm
5130 0050	0.5"	1.625	41.3
5130 0075	0.75"	1.625	41.3
5130 0100	1"	1.75	44.4
5130 0150	1.5"	1.75	44.4
5130 0200	2"	1.812	46.0
5130 0250	2.5"	2.312	58.7
5130 0300	3"	2.5	63.5
5130 0400	4"	2.562	65.1

**T304 and T316L are available.

22WB
Weld X Female NPT Adapter

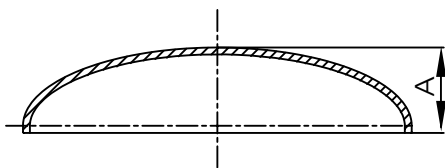


Basic Ordering Number: 5131

NO.	Size	A	
		inch	mm
5131 0050	0.5"	1.25	31.7
5131 0075	0.75"	1.625	41.3
5131 0100	1"	1.75	44.4
5131 0150	1.5"	1.75	44.4
5131 0200	2"	1.812	46.0
5131 0250	2.5"	2.312	58.7
5131 0300	3"	2.5	63.5
5131 0400	4"	2.5	63.5

**T304 and T316L are available.

16W
Butt Weld Dome Cap



Basic Ordering Number: 5132

NO.	Size	A	
		inch	mm
5132 0100	1"	0.375	9.5
5132 0150	1.5"	0.562	14.3
5132 0200	2"	0.75	19.05
5132 0250	2.5"	1	25.4
5132 0300	3"	1.25	31.7
5132 0400	4"	1.5	38.1
5132 0600	6"	1.875	47.6
5132 0800	8"	2.5	63.5

**T304 and T316L are available.

NOTE! Treatment: Annealed.

**All measurements are in millimeters (mm)
Conversion to inches, 25.4mm=1inch

Weld Fittings

Part for ASTM A270 tubes

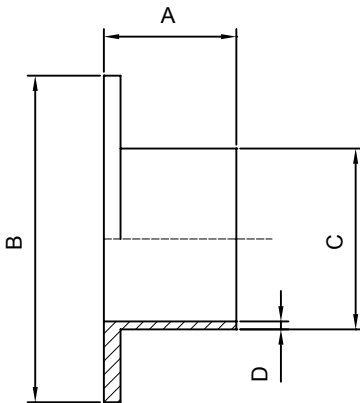


TUBES AND FITTINGS GEMO

Finish: OD: Semi bright. ID: Mirror
Connections: Welding ends

1.1

14WA
Stub End

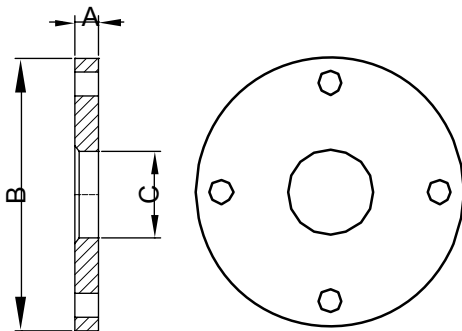


Basic Ordering Number: 5133

NO.	Size	A		B		C		D	
		inch	mm	inch	mm	inch	mm	inch	mm
5133 0100	1"	1.625	41.3	2	50.8	1	25.4	0.065	1.65
5133 0150	1.5"	1.75	44.4	2.875	73.0	1.5	38.1	0.065	1.65
5133 0200	2"	1.5	38.1	3.625	92.0	2	50.8	0.065	1.65
5133 0250	2.5"	2	50.8	4.125	104.8	2.5	63.5	0.065	1.65
5133 0300	3"	2.25	57.1	5	127	3	76.2	0.065	1.65
5133 0400	4"	2.625	66.7	6.187	157.1	4	101.6	0.084	2.11
5133 0600	6"	3	76.2	8.5	215.9	6	152.4	0.109	2.77
5133 0800	8"	3	76.2	10.625	269.9	8	203.2	0.12	3.05
5133 1000	10"	3.5	88.9	12.45	316.2	10	254	0.109	2.77

**T304 and T316L are available.

38SL
Slip-On Flanges

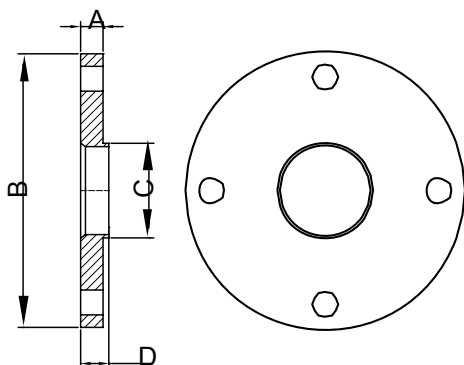


Basic Ordering Number: 5134

NO.	Size	A		B		C	
		inch	mm	inch	mm	inch	mm
5134 0100	1"	0.375	9.5	4.25	107.9	1.063	27.0
5134 0150	1.5"	0.375	9.5	5	127	1.563	39.7
5134 0200	2"	0.437	11.1	6	152.4	2.063	52.4
5134 0250	2.5"	0.437	11.1	7	177.8	2.563	65.1
5134 0300	3"	0.5	12.7	7.5	190.5	3.063	77.8
5134 0400	4"	0.562	14.3	9	228.6	4.063	103.2
5134 0600	6"	0.562	14.3	11	279.4	6.063	154.0
5134 0800	8"	0.687	17.4	13.5	342.9	8.063	204.8
5134 1000	10"	0.687	17.4	16	406.4	10.063	255.6

**T304 and T316L are available.

38W
Weld Neck Flanges



Basic Ordering Number: 5135

NO.	Size	A		B		C		D	
		inch	mm	inch	mm	inch	mm	inch	mm
5135 0100	1"	0.375	9.5	4.25	107.9	1	25.4	0.5	12.7
5135 0150	1.5"	0.375	9.5	5	127	1.5	38.1	0.5	12.7
5135 0200	2"	0.5	12.7	6	152.4	2	50.8	0.625	15.9
5135 0250	2.5"	0.5	12.7	7	177.8	2.5	63.5	0.625	15.9
5135 0300	3"	0.5	12.7	7.5	190.5	3	76.2	0.625	15.9
5135 0400	4"	0.5	12.7	9	228.6	4	101.6	0.625	15.9
5135 0600	6"	0.5	12.7	11	279.4	6	152.4	0.625	15.9
5135 0800	8"	0.5	12.7	13.5	342.9	8	203.2	0.625	15.9
5135 1000	10"	0.5	12.7	16	406.4	10	254.0	0.625	15.9

**T304 and T316L are available.

**All measurements are in millimeters (mm)
Conversion to inches, 25.4mm=1inch

Weld Fittings

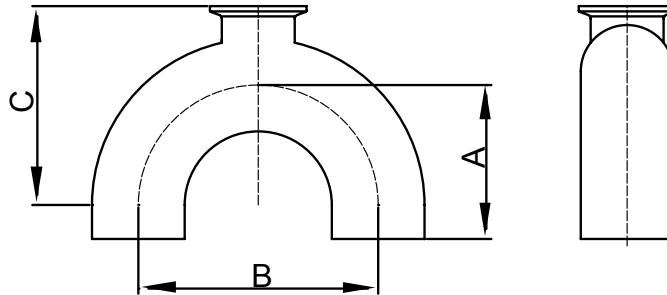
Part for ASTM A270 tubes

Finish: OD: Semi bright. ID: Mirror
Connections: Welding ends



180 Degree Bottom Outlet Use Point Fitting

1.1



Basic Ordering Number: 5136

NO.	Size	A		B		C	
		inch	mm	inch	mm	inch	mm
5136 10050	1"x0.5"	3.75	95.25	4.5	114.3	5	127.0
5136 10075	1"x0.75"	3.75	95.25	4.5	114.3	5	127.0
5136 15050	1.5"x0.5"	4.5	114.3	6	152.4	6	152.4
5136 15075	1.5"x0.75"	4.5	114.3	6	152.4	6	152.4
5136 15100	1.5"x1"	4.5	114.3	6	152.4	6.13	155.7
5136 20050	2"x0.5"	5	127	6	152.4	6.75	171.5
5136 20075	2"x0.75"	5	127	6	152.4	6.75	171.5
5136 20100	2"x1"	5	127	6	152.4	7	177.8
5136 20150	2"x1.5"	5	127	6	152.4	6.75	171.5
5136 25050	2.5"x0.5"	5.75	146.05	7.5	190.5	7.75	196.9
5136 25075	2.5"x0.75"	5.75	146.05	7.5	190.5	7.75	196.9
5136 25100	2.5"x1"	5.75	146.05	7.5	190.5	7.94	201.7
5136 25150	2.5"x1.5"	5.75	146.05	7.5	190.5	7.75	196.9
5136 25200	2.5"x2"	5.75	146.05	7.5	190.5	8.13	206.5
5136 30050	3"x0.5"	6.5	165.1	9	228.6	8.75	222.3
5136 30075	3"x0.75"	6.5	165.1	9	228.6	8.75	222.3
5136 30100	3"x1"	6.5	165.1	9	228.6	9	228.6
5136 30150	3"x1.5"	6.5	165.1	9	228.6	8.81	223.8
5136 30200	3"x2"	6.5	165.1	9	228.6	8.75	222.3
5136 30250	3"x2.5"	6.5	165.1	9	228.6	9.13	231.9
5136 40050	4"x0.5"	8.5	215.9	12	304.8	11.25	285.8
5136 40075	4"x0.75"	8.5	215.9	12	304.8	11.25	285.8
5136 40100	4"x1"	8.5	215.9	12	304.8	11.56	293.6
5136 40150	4"x1.5"	8.5	215.9	12	304.8	11.44	290.6
5136 40200	4"x2"	8.5	215.9	12	304.8	11.25	285.8
5136 40250	4"x2.5"	8.5	215.9	12	304.8	11.63	295.4
5136 40300	4"x3"	8.5	215.9	12	304.8	11.63	295.4

**T304 and T316L are available.

NOTE! Treatment: Annealed.

**All measurements are in millimeters (mm)
Conversion to inches, 25.4mm=1inch

Weld Fittings

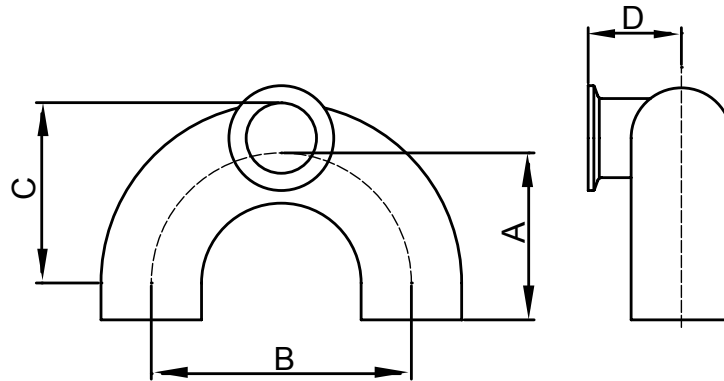
Part for ASTM A270 tubes

Finish: OD: Semi bright. ID: Mirror
Connections: Welding ends



1.1

180 Degree Side Outlet Use-Point Fitting



Basic Ordering Number: 5137

NO.	Size	A		B		C		D	
		inch	mm	inch	mm	inch	mm	inch	mm
5137 10075	1"x0.75"	3.75	95.2	4.5	114.3	3.88	98.6	1.25	31.8
5137 15075	1.5"x0.75"	4.5	114.3	6	152.4	4.88	124.0	1.75	44.5
5137 15100	1.5"x1"	4.5	114.3	6	152.4	4.75	120.7	1.75	44.5
5137 20075	2"x0.75"	5	127	6	152.4	5.63	143.0	1.75	44.5
5137 20100	2"x1"	5	127	6	152.4	5.5	139.7	1.75	44.5
5137 20150	2"x1.5"	5	127	6	152.4	5.25	133.4	1.75	44.5
5137 25100	2.5"x1"	5.75	146.0	7.5	190.5	6.5	165.1	1.75	44.5
5137 25150	2.5"x1.5"	5.75	146.0	7.5	190.5	6.25	158.8	1.75	44.5
5137 25200	2.5"x2"	5.75	146.0	7.5	190.5	6	152.4	2.25	57.2
5137 30100	3"x1"	6.5	165.1	9	228.6	7.5	190.5	2.25	57.2
5137 30150	3"x1.5"	6.5	165.1	9	228.6	7.25	184.2	2.25	57.2
5137 30200	3"x2"	6.5	165.1	9	228.6	7	177.8	2.25	57.2
5137 30250	3"x2.5"	6.5	165.1	9	228.6	6.75	171.5	2.25	57.2
5137 40100	4"x1"	8.5	215.9	12	304.8	10	254.0	-	-
5137 40150	4"x1.5"	8.5	215.9	12	304.8	9.75	247.7	-	-
5137 40200	4"x2"	8.5	215.9	12	304.8	9.5	241.3	-	-
5137 40250	4"x2.5"	8.5	215.9	12	304.8	9.25	235.0	-	-
5137 40300	4"x3"	8.5	215.9	12	304.8	9	228.6	-	-

**T304 and T316L are available.

**All measurements are in millimeters (mm)
Conversion to inches, 25.4mm=1inch

Weld Fittings

Part for ASTM A270 tubes

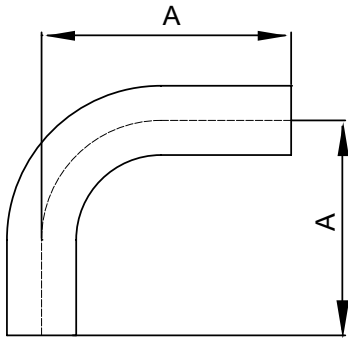


TUBES AND FITTINGS GEMO

Finish: OD: Semi bright. ID: Mirror
Connections: Welding ends

1.1

2S Bend 90° Automatic Tri-Weld

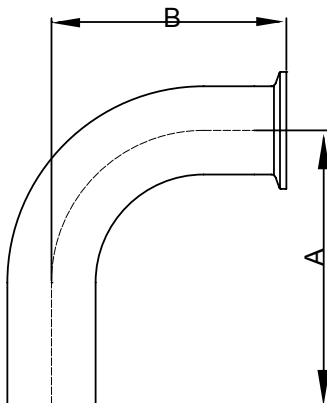


Basic Ordering Number: 5138

NO.	Size	A	
		inch	mm
5138 0050	0.5"	3	76.2
5138 0075	0.75"	3	76.2
5138 0100	1"	3	76.2
5138 0150	1.5"	3.75	95.25
5138 0200	2"	4.75	120.65
5138 0250	2.5"	5.5	139.7
5138 0300	3"	6.25	158.75
5138 0400	4"	8	203.2
5138 0600	6"	11.5	292.1

**T304 and T316L are available.

2CMW Bend90°Tri-Clamp x Automatic Tri-Weld

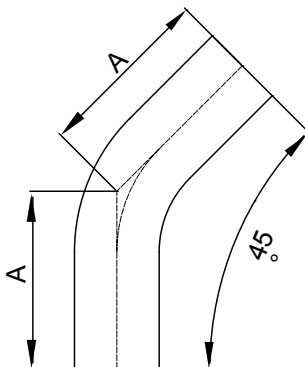


Basic Ordering Number: 5139

NO.	Size	A		B	
		inch	mm	inch	mm
5139 0050	0.5"	3	76.2	1.63	41.4
5139 0075	0.75"	3	76.2	1.63	41.4
5139 0100	1"	3	76.2	2	50.8
5139 0150	1.5"	3.75	95.25	2.75	69.85
5139 0200	2"	4.75	120.65	3.5	88.9
5139 0250	2.5"	5.5	139.7	4.25	107.95
5139 0300	3"	6.25	158.75	5	127
5139 0400	4"	8	203.2	6.63	168.4
5139 1000	10"	0.687	17.4	16	406.4

**T304 and T316L are available.

2KS Bend 45°, Automatic Tri-Weld



Basic Ordering Number: 5140

NO.	Size	A	
		inch	mm
5140 0050	0.5"	2.25	57.2
5140 0075	0.75"	2.25	57.2
5140 0100	1"	2.25	57.2
5140 0150	1.5"	2.5	63.5
5140 0200	2"	3	76.2
5140 0250	2.5"	3.38	85.9
5140 0300	3"	3.63	92.2
5140 0400	4"	4.5	114.3
5140 0600	6"	6.25	158.8

**T304 and T316L are available.

NOTE! Treatment: Annealed.

**All measurements are in millimeters (mm)
Conversion to inches, 25.4mm=1inch

Weld Fittings

Part for ASTM A270 tubes

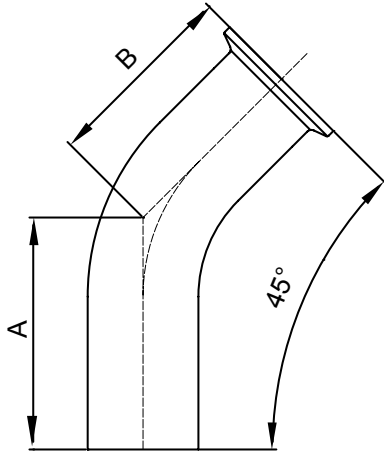


TUBES AND FITTINGS **GEMO**

Finish: OD: Semi bright. ID: Mirror
Connections: Welding ends

1.1

2KMW
Bend 45°Tri-Clamp x Automatic Tri-Weld

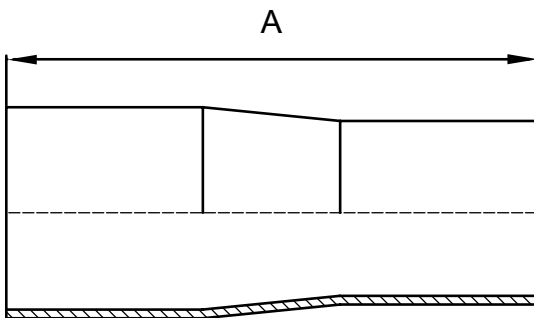


Basic Ordering Number: 5141

NO.	Size	A		B	
		inch	mm	inch	mm
5141 0050	0.5"	2.25	57.2	1	25.4
5141 0075	0.75"	2.25	57.2	1	25.4
5141 0100	1"	2.25	57.2	1.1	27.9
5141 0150	1.5"	2.5	63.5	1.4	35.6
5141 0200	2"	3	76.2	1.8	45.7
5141 0250	2.5"	3.38	85.9	2.1	53.3
5141 0300	3"	3.63	92.2	2.3	58.4
5141 0400	4"	4.5	114.3	3.1	78.7
5141 1000	10"	0.687	17.4	16	406.4

**T304 and T316L are available.

31
Concentric reducer automatic Weld



Basic Ordering Number: 5142

NO.	Size	A	
		inch	mm
5142 07550	0.75"x0.5"	4	101.6
5142 10050	1"x0.5"	4.5	114.3
5142 10075	1"x0.75"	4	101.6
5142 15050	1.5"x0.5"	5.5	139.7
5142 15075	1.5"x0.75"	5	127.0
5142 15100	1.5"x1"	5	127.0
5142 20075	2"x0.75"	7.25	184.2
5142 20100	2"x1"	7.25	184.2
5142 20150	2"x1.5"	5.25	133.4
5142 25150	2.5"x1.5"	7.5	190.5
5142 25200	2.5"x2"	5.5	139.7
5142 30150	3"x1.5"	9.25	235.0
5142 30200	3"x2"	7.5	190.5
5142 30250	3"x2.5"	5.5	139.7
5142 40200	4"x2"	11.75	298.5
5142 40250	4"x2.5"	9.75	247.7
5142 40300	4"x3"	7.75	196.9
5142 40250	6"x3"	10	254.0
5142 40300	6"x4"	10	254.0

**T304 and T316L are available.

**All measurements are in millimeters (mm)
Conversion to inches, 25.4mm=1inch

Weld Fittings

Part for ASTM A270 tubes

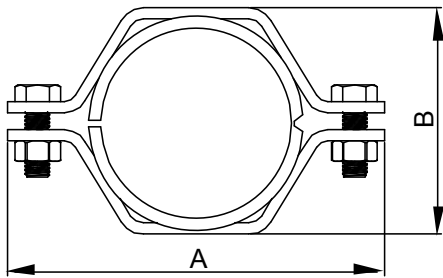


TUBES AND FITTINGS GEMO

Finish: OD: Semi bright. ID: Mirror
Connections: Welding ends

1.1

Tube Hanger Hex Hanger with PVC

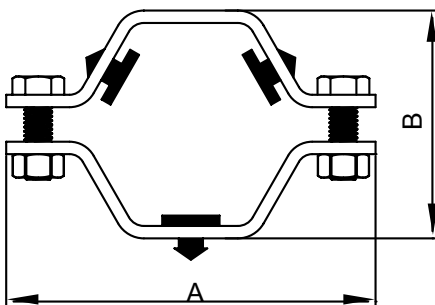


Basic Ordering Number: 5143

NO.	Size	A		B	
		inch	mm	inch	mm
5143 0050	0.5"	2.8	71.1	1.15	29.21
5143 0075	0.75"	2.8	71.1	1.15	29.21
5143 0100	1"	3.425	87.0	1.45	36.8
5143 0150	1.5"	4	101.6	2.125	54.0
5143 0200	2"	4.5	114.3	2.5	63.5
5143 0250	2.5"	4.95	125.7	3.125	79.4
5143 0300	3"	5.5	139.7	3.75	95.3
5143 0400	4"	6.95	176.5	4.75	120.7
5143 0600	6"	9.25	235.0	6.625	168.3

**T304 and T316L are available.

Tube Hanger Hex Hanger with Rubber Grommets



Basic Ordering Number: 5144

NO.	Size	A		B	
		inch	mm	inch	mm
5144 0100	1"	3.425	87.0	1.45	36.8
5144 0150	1.5"	4	101.6	2.125	54.0
5144 0200	2"	4.5	114.3	2.5	63.5
5144 0250	2.5"	4.95	125.7	3.125	79.4
5144 0300	3"	5.5	139.7	3.75	95.3
5144 0400	4"	6.95	176.5	4.75	120.7
5144 0600	6"	9.25	235.0	6.625	168.3

**T304 and T316L are available.

NOTE! Treatment: Annealed.

**All measurements are in millimeters (mm)
Conversion to inches, 25.4mm=1inch