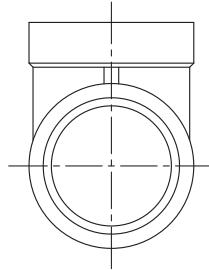
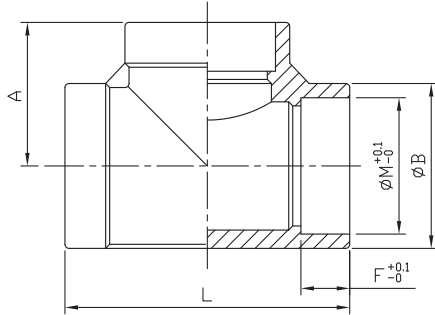


# Tee sw

# F35

## Class 150



## Standard Pattern

SIZE	1/8"		1/4"		3/8"		1/2"		3/4"		1"		1-1/4"		1-1/2"		2"		2-1/2"		3"		4"	
	mm	in	mm	in	mm	in	mm	in	mm	in	mm	in	mm	in	mm	in	mm	in	mm	in	mm	in	mm	in
A	17	0.67	19.5	0.77	22	0.87	27	1.06	30	1.18	35	1.38	42.5	1.67	44.5	1.75	53.5	2.11	66	2.6	72	2.83	91	3.58
B	15	0.59	18.5	0.73	22	0.87	29	1.14	32.2	1.27	39.5	1.56	49	1.93	56	2.2	67.6	2.66	87.5	3.44	100	3.94	126	4.96
L	34	1.34	39	1.54	44	1.73	54	2.13	60	2.36	70	2.76	85	3.35	88.5	3.48	107	4.21	129	5.08	144	5.67	180	7.09
M	11	0.43	14	0.55	17.5	0.69	22	0.87	27.5	1.08	34	1.34	43.3	1.7	49	1.93	61	2.4	73.5	2.89	89.8	3.54	115.5	4.55
F	8.1	0.32	8.1	0.32	8.1	0.32	8.1	0.32	9.4	0.37	11.2	0.44	12.7	0.5	12.7	0.5	14.2	0.56	14.2	0.56	14.2	0.56	17.5	0.69

Tolerance:  $\pm 0.5\text{mm}$ (1/8"~2")  
 $\pm 0.8\text{mm}$ (2-1/2"~4")



13548



II2GD



EC 1907/2006



2002/95/EC

8F., No.201, Sec. 2, Tiding Blvd., Neihs District, Taipei City 114, Taiwan R.O.C.

TEL : +886-2-2658-5800

FAX : +886-2-2658-2266 / 2799-7766

[Http://www.haitima.com.tw](http://www.haitima.com.tw)

E-mail : [haitima@seed.net.tw](mailto:haitima@seed.net.tw)