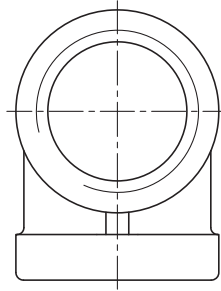
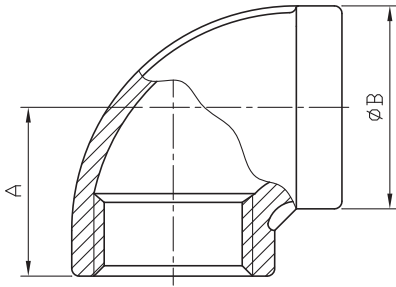


Elbow 90°

F01

Class 150



Standard Pattern

SIZE	1/8"		1/4"		3/8"		1/2"		3/4"		1"		1-1/4"		1-1/2"		2"		2-1/2" (NPT)		2-1/2" (PS)		3"		4"		
	mm	in	mm	in	mm	in	mm	in	mm	in	mm	in	mm	in	mm	in	mm	in	mm	in	mm	in	mm	in	mm	in	mm
A	17	0.67	19	0.75	21.5	0.85	27	1.06	30	1.18	35	1.38	43	1.69	45	1.77	54	2.13	69	2.72	69	2.72	72	2.83	89	3.5	
B	15.5	0.61	18.8	0.74	22.5	0.89	25.5	1	31.6	1.24	41.2	1.62	48.5	1.91	54.9	2.16	67.4	2.65	81.3	3.2	83.6	3.29	100.5	3.96	126.5	4.98	

Tolerance: $\pm 0.5\text{mm}$ (1/8" ~ 2")
 $\pm 0.8\text{mm}$ (2-1/2" ~ 4")

Economic Pattern

SIZE	1/8"		1/4"		3/8"		1/2"		3/4"		1"		1-1/4"		1-1/2"		2"		2-1/2" (NPT)		2-1/2" (PS)		3"		4"	
	mm	in	mm	in	mm	in	mm	in	mm	in	mm	in	mm	in	mm	in	mm	in	mm	in	mm	in	mm	in	mm	in
A	17	0.67	19	0.75	21.5	0.85	27	1.06	30	1.18	35	1.38	43	1.69	45	1.77	54	2.13	69	2.72	69	2.72	77	3.03	92.5	3.64
B	13.9	0.55	17.4	0.69	20.9	0.82	24.9	0.98	31.2	1.23	38.1	1.5	47.4	1.87	54.1	2.13	66.6	2.62	80.1	3.15	82.4	3.24	95.9	3.78	121.8	4.8

Tolerance: $\pm 0.5\text{mm}$ (1/8" ~ 2")
 $\pm 0.8\text{mm}$ (2-1/2" ~ 4")



TRD 100 Type Approval P-13548 CE CRN REGISTERED A3 6E-1017 Ex ATEX TA-Luft ISO 15848 REACH RoHS

8F., No.201, Sec. 2, Tiding Blvd., Neihu District, Taipei City 114, Taiwan R.O.C.
 TEL : +886-2-2658-5800 FAX : +886-2-2658-2266 / 2799-7766

[Http://www.haitima.com.tw](http://www.haitima.com.tw)
 E-mail : haitima@seed.net.tw