

NAMUR SOLENOID VALVE Specification



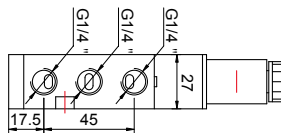
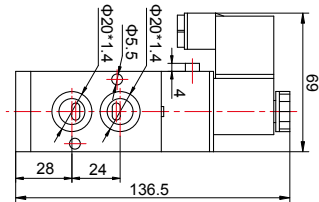
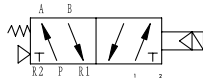
Model	HSV310-08	HSV320-08
Medium	Air	
Operating	Internal Piloted	
Valve Type	5 Port 2 Position	
Orifice Size	35mm ²	
Port Size	Inlet & Exhaust Port:PF1/4"	
Lubrication	Not Required	
Pressure Range	0.15 ~ 0.8 Mpa	
Proof Pressure	12bar	
Temp. Range	-5 ~ 60°C (23 ~ 140°F)	
Voltage Range	-15% ~ 10%	
Power Consumption	AC=2.0~3.5VA, DC=2.5W	
Insulation Class	Class F	
Protection	IP65(DIN40050)	
Connector	Socket with Plug	
Max Frequency	5 cycle/second	

Note: Port thread PT and NPT are also available.

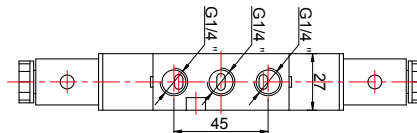
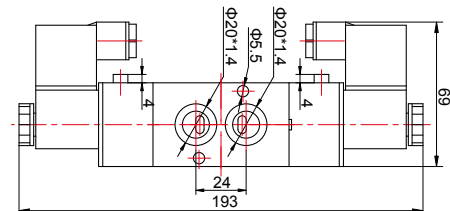
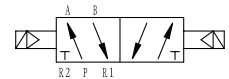
Specification of Explosion-Proof Type

Protection	EExmIIT4
Voltage Range	±10%
Power Consumption	AC = 4.4VA, DC = 5W
Insulation Class	Class F

HSV310-08



HSV320-08



Order Information:

HSV - 310 - 08 - AC220 - L

Model

Port Size:08:1/4"

Blank: DIN Connector

L: LED

E: Explosion-Proof

310:Single Solenoid,5/2 way
320:Double Solenoid,5/2 way

DC12V
DC24V
AC24V,50/60Hz
AC110V,50/60Hz
AC220V,50/60Hz

Flow features:

