

Overview



SITRANS WF200 and WF250 flowmeters are medium to high capacity flowmeters for various product sizes, densities, and fluidities.

Benefits

- For specialized pre-feed applications
- Sensing element mounted outside process
- Flowrates from 200 to 900 t/h (220 to 990 STPH)
- Continuously monitoring of the material flow without interrupting the process
- Dust-tight construction: suitable for use in hazardous areas and in washdown applications that require frequent cleaning
- Minimal maintenance or recalibration after the initial installation and material tests

Application

Operating with a microprocessor based integrator package, the WF200 series flowmeters display flow rate, totalized flow, and rate alarms. Outputs are 0/4 to 20 mA proportional to rate and contact closure for remote totalization. Dry bulk solids enter the flowmeter before continuing through the process unhindered. The load cells convert the horizontal force of the deflection into an electrical signal. The integrator processes this into flowrate and integrated total weight. The sensing process is immune to the effect of product build-up as only the horizontal force is measured.

With load cells located externally to the process, the WF200 series flowmeters measure high capacities with a maximum rate of 900 t/h (990 STPH). For high capacity aerated gravity conveyor pre-feed, the WF250 has a maximum rate of 900 t/h (990 STPH).

Key applications

- Aggregates
- Grain
- Cement
- Mineral processing

Solids Flowmeters

LVDT flowmeters

SITRANS WF200 series

Selection and ordering data

SITRANS WF200 series flowmeters

SITRANS WF200 and WF250 flowmeters are medium to high capacity flowmeters for various product sizes, densities, and fluidities. WF250 features aerated style designed for air slide gravity conveyors.

➤ Click on the Article No. for the online configuration in the PIA Life Cycle Portal.

Model

SITRANS WF200

500 t/h maximum design capacity

900 t/h maximum design capacity

SITRANS WF250, aerated style

500 t/h maximum design capacity

900 t/h maximum design capacity

Construction

Painted mild steel

304 stainless steel for model option 1

304 stainless steel for model option 2

304 stainless steel for model option 3

304 stainless steel for model option 4

316 stainless steel for model option 1

316 stainless steel for model option 2

316 stainless steel for model option 3

316 stainless steel for model option 4

Sensing plate liner

None (standard 304 stainless steel, 316 for construction options F ... J)

Polyurethane

For model options 1 and 3

For model options 2 and 4

Alumina ceramic tiles

For model options 1 and 3

For model options 2 and 4

Load cell

50 lb

100 lb

Not specified (for quotation purposes only, not a valid ordering option)

Approvals

CE, RCM

CE, RCM, CSA/FM Class II, Div. 1, Groups E, F, G and Class III ATEX II 2D, Ex tD A21 IP65 T70 °C, CE, RCM, IECEx, Ex tD A21 IP65 T70 °C

Article No.

7MH7115-

0

1

2

3

4

A

B

C

D

E

F

G

H

J

A

B

C

D

E

1

2

0

1

2

Further designs

Please add "-Z" to article no. and specify order code(s).

Stainless steel tag [69 x 38 mm (2.7 x 1.5 inch)], Measuring-point number/identification (max 27 characters), specify in plain text.

Application Eng. reference number (max.15 characters), specify in plain text.

Manufacturer's test certificate: According to EN 10204-2.2

Inspection certificate type 3.1 per EN 10204¹⁾

Instruction manuals

• English

• German

Note: The instruction manual should be ordered as a separate item on the order.

Additional instruction manuals

• Solids Flowmeter Application Guide, English

• Solids Flowmeter Application Guide, German

This device is shipped with the Siemens Milltronics manual DVD containing the complete instruction manual library.

Calibration hanger weights

20 g (0.04 lb)

50 g (0.1 lb)

100 g (0.2 lb)

200 g (0.4 lb)

500 g (1.1 lb)

1 000 g (2.2 lb)

2 000 g (4.4 lb)

5 000 g (11 lb)

Note: Calibration accessories should be ordered as a separate item on the order.

Spare parts

Load cell, 50 lb, stainless steel

Load cell, 100 lb, stainless steel

Load cell, 50 lb, stainless steel, CSA/FM/ATEX/IEC EX

Load cell, 100 lb, stainless steel, CSA/FM/ATEX/IEC EX

WF calibration pulley with hardware and cable spare

WF200 series bearing with plate mount shaft, standard, spare

WF200 series bearing with plate mount shaft, stainless steel, spare

WF200 series sensing plate support cables, spare

WF250 series sensing plate support cables, spare

WF200 sensing plate 500 TPH 304, standard

WF200 sensing plate 900 TPH 304, standard

WF250 sensing plate 500 TPH 304, standard

WF250 sensing plate 900 TPH 304, standard

WF200 sensing plate 500 TPH 304, polyurethane lined

WF200 sensing plate 900 TPH 304, polyurethane lined

WF250 sensing plate 500 TPH 304, polyurethane lined

WF250 sensing plate 900 TPH 304, polyurethane lined

Order Code

Y15

Y31

C11

C12

Article No.

7ML1998-5NC01

7ML1998-5NC31

7ML1998-5GK01

7ML1998-5GK31

7MH7724-1AC

7MH7724-1AD

7MH7724-1AE

7MH7724-1AF

7MH7724-1AG

7MH7724-1AH

7MH7724-1AJ

7MH7724-1AK

7MH7725-1AC

7MH7725-1AD

7MH7725-1DT

7MH7725-1DU

7MH7723-1LT

7MH7723-1LU

7MH7723-1LV

7MH7723-1LW

7MH7723-1LX

7MH7723-1LY

7MH7723-1MA

7MH7723-1MB

7MH7723-1MC

7MH7723-1MD

7MH7723-1ME

7MH7723-1MF

7MH7723-1MG

¹⁾ Not available with construction option A.

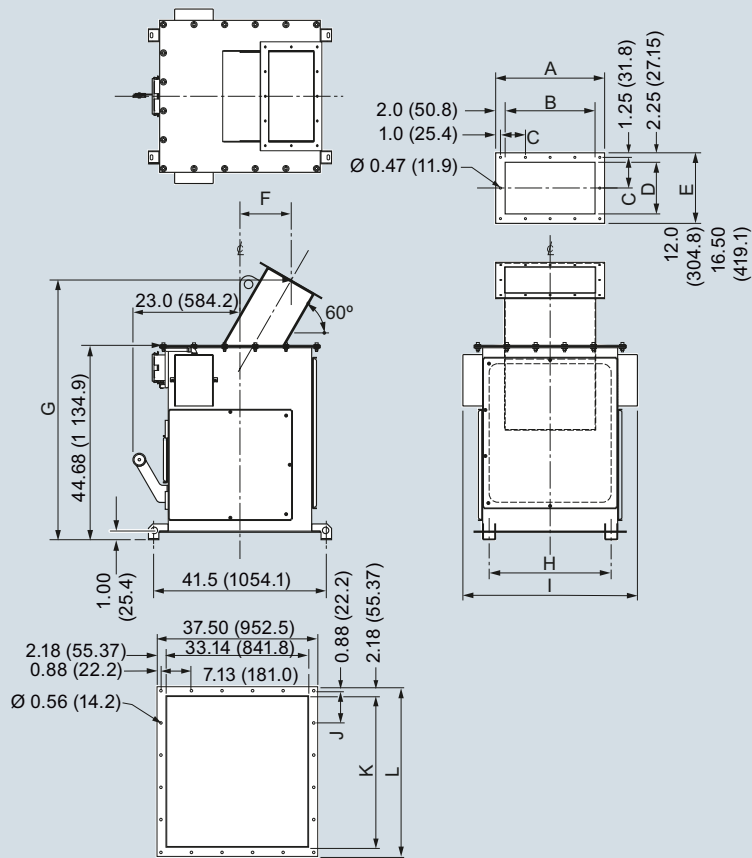
Selection and ordering data	Article No.
WF200 sensing plate 500 TPH 304, ceramic lined	7MH7723-1MH
WF200 sensing plate 900 TPH 304, ceramic lined	7MH7723-1MJ
WF250 sensing plate 500 TPH 304, ceramic lined	7MH7723-1MK
WF250 sensing plate 900 TPH 304, ceramic lined	7MH7723-1ML
WF200 sensing plate 500 TPH 316, standard	7MH7723-1MM
WF200 sensing plate 900 TPH 316, standard	7MH7723-1MN
WF250 sensing plate 500 TPH 316, standard	7MH7723-1MP
WF250 sensing plate 900 TPH 316, standard	7MH7723-1MQ
WF200 sensing plate 500 TPH 316, polyurethane lined	7MH7723-1MR
WF200 sensing plate 900 TPH 316, polyurethane lined	7MH7723-1MS
WF250 sensing plate 500 TPH 316, polyurethane lined	7MH7723-1MT
WF250 sensing plate 900 TPH 316, polyurethane lined	7MH7723-1MU
WF200 sensing plate 500 TPH 316, ceramic lined	7MH7723-1MV
WF200 sensing plate 900 TPH 316, ceramic lined	7MH7723-1MW
WF250 sensing plate 500 TPH 316, ceramic lined	7MH7723-1MX
WF250 sensing plate 900 TPH 316, ceramic lined	7MH7723-1MY

Solids Flowmeters

LVDT flowmeters

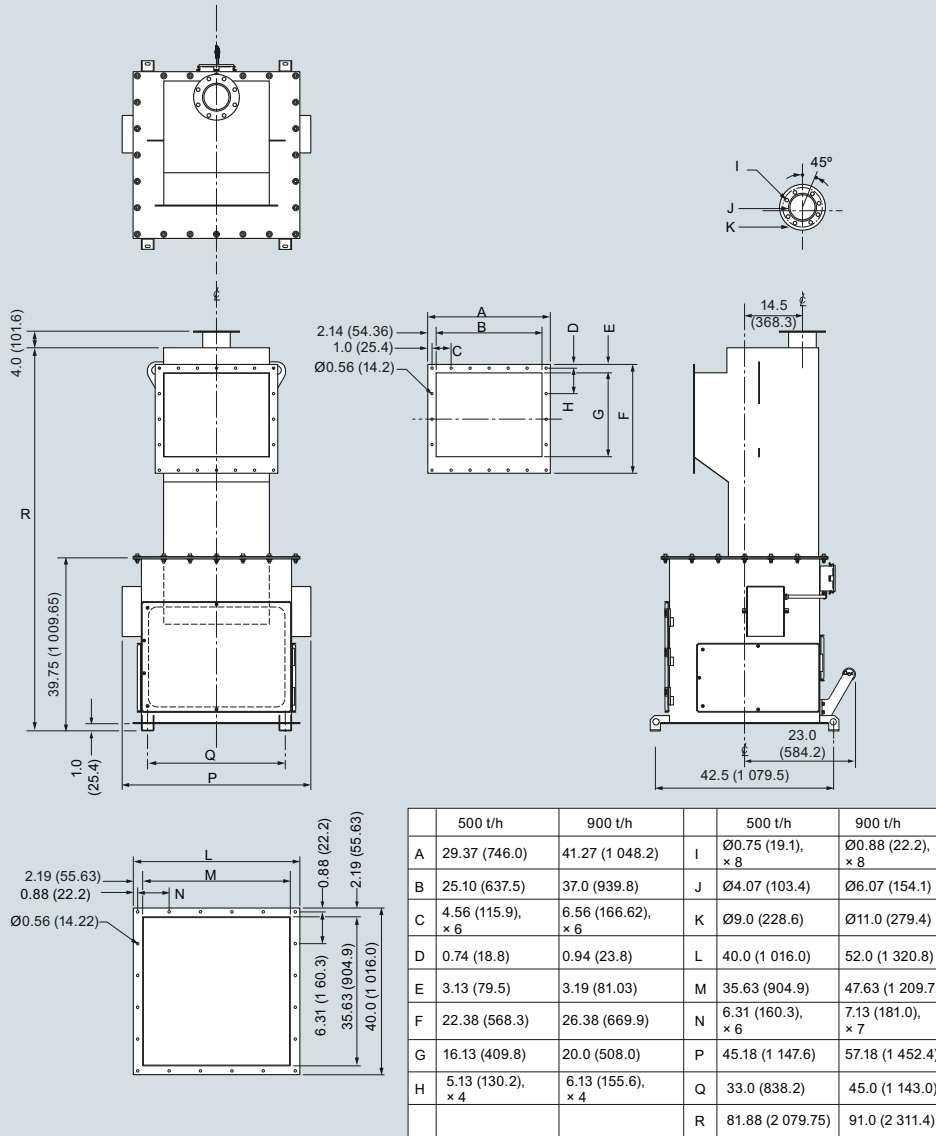
SITRANS WF200 series

Dimensional drawings



	500 t/h	900 t/h
A	25.0 (635.0)	30.0 (762.0)
B	21.0 (533.4)	26.0 (660.4)
C	5.75 (146.1), × 4	7.0 (177.8), × 4
D	12.0 (304.8)	12.0 (304.8)
E	16.5 (419.1)	16.5 (419.1)
F	11.97 (304.1)	14.86 (377.4)
G	59.0 (1498.6)	64.0 (1 625.6)
H	29.13 (739.8)	35.13 (892.2)
I	40.68 (1 033.3)	46.68 (1 185.7)
J	6.75 (171.5), × 5	6.63 (168.3), × 6
K	31.14 (791.0)	37.14 (943.4)
L	35.5 (901.7)	41.5 (1 054.1)

WF200, dimensions in inch (mm)



WF250, dimensions in inch (mm)

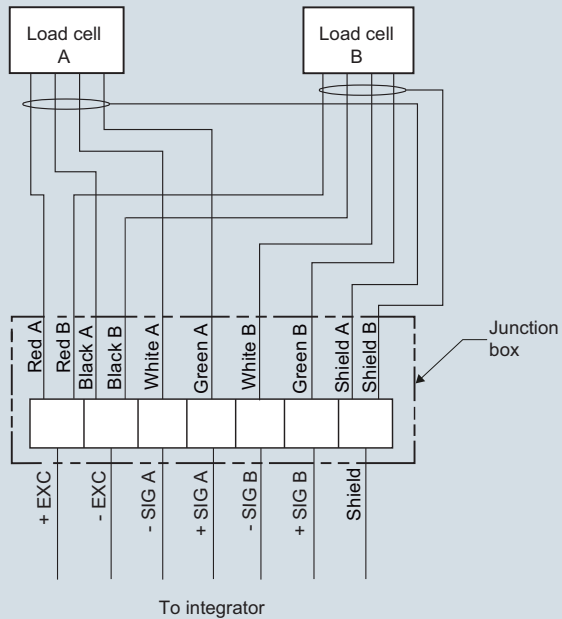
Solids Flowmeters

LVDT flowmeters

SITRANS WF200 series

Schematics

Note: conduit and cable arrangement may differ from example shown.
Conduit and connector not provided on hazardous option



WF200 and WF250 connections