



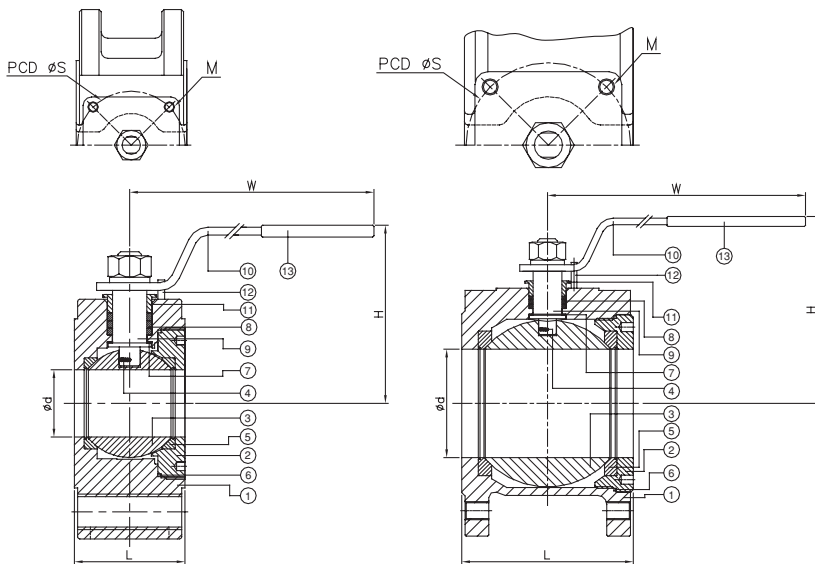
# 1-PC. FLANGED END BALL VALVE

# 2052A



## FEATURES

- Full port, 1/2"~4" (DN15~DN100)
- W.P. : PN10/16/40  
CLASS 150
- W.T. : -20°C~200°C (-4°F~392°F)
- Wafer type
- Investment casting
- Blow-out proof stem
- Anti-static device (option)
- ISO 5211 Mounting pad
- ISO 5211 Direct mounting pad - 2052AD (option)



ITEM	PARTS	MATERIAL	
1	BODY	ASTM A351-CF8M	ASTM A216-WCB
2	RETAINER		
3	BALL	ASTM A351-CF8M	
4	ANTI-STATIC DEVICE	AISI 316	
5	SEAT	PTFE	
6	SEAL		
7	THRUST WASHER		
8	PACKING		
9	STEM	ASTM A276-316	
10	HANDLE	STAINLESS STEEL	
11	GLAND NUT	AISI 304	
12	STOP PIN		
13	HANDLE SLEEVE	PVC	

DN	d	S	M	L	W	CLASS 150		PN 16/40		
						H	Torque(N-M)	PN	H	Torque(N-M)
15	15	36	M5	36	150	68	5.2	PN 16-40	70	5.5
20	20	36	M5	38	150	72	7		70	7.5
25	25	36	M5	43	150	75	8.3		80	8.5
32	32	36	M5	51	156	88.5	12.7		87	12
40	38	50	M6	63	180	110	38.2	PN 16-40	102	20
50	50	50	M6	70	180	118.5	45.9		108	30
65	65	70	M8	107	282	140	53.6	PN 10-16	143	50
80	76	70	M8	120	290	152	82.8		152	65
100	96	102	M10	152	325	168	104.5		168	90

unit:mm

NPS	d	S	M	L	W	CLASS 150		PN 16/40		
						H	Torque(in-lb)	PN	H	Torque(in-lb)
1/2"	0.59	1.42	M5	1.42	5.91	2.68	46	PN 16-40	2.76	48.68
3/4"	0.79	1.42	M5	1.5	5.91	2.83	62.1		2.76	66.38
1"	0.98	1.42	M5	1.69	5.91	2.95	73.6		3.15	75.23
1-1/4"	1.26	1.42	M5	2.01	6.14	3.48	112.8		3.43	106.21
1-1/2"	1.5	1.97	M6	2.48	7.09	4.33	338.3	PN 16-40	4.02	177.01
2"	1.97	1.97	M6	2.76	7.09	4.67	406.2		4.25	265.52
2-1/2"	2.56	2.76	M8	4.21	11.1	5.51	474	PN 10-16	5.63	442.54
3"	2.99	2.76	M8	4.72	11.42	5.98	732.9		5.98	575.3
4"	3.78	4.02	M10	5.98	12.8	6.61	925.1		6.61	796.56

unit:in



8F., No.201, Sec. 2, Tiding Blvd., Neihu District, Taipei City 114, Taiwan R.O.C.  
TEL : +886-2-2658-5800 FAX : +886-2-2658-2266 / 2799-7766

[Http://www.haitima.com.tw](http://www.haitima.com.tw)  
E-mail : [haitima@seed.net.tw](mailto:haitima@seed.net.tw)