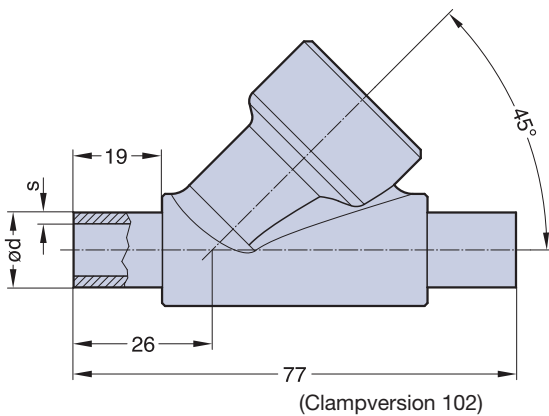
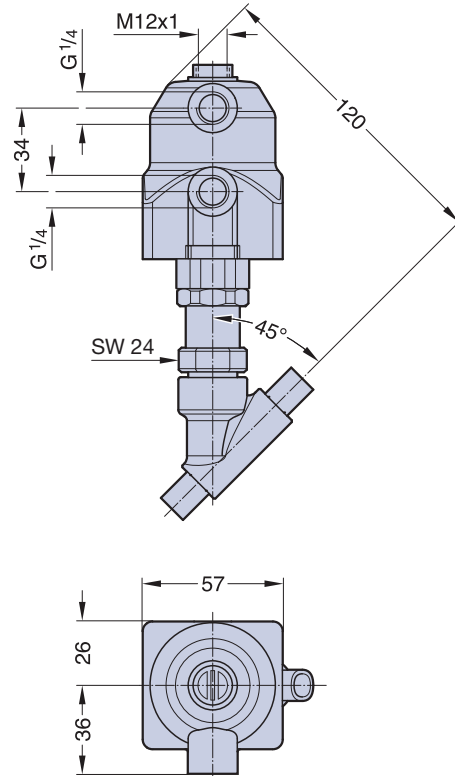


Type 584, Actuator 43



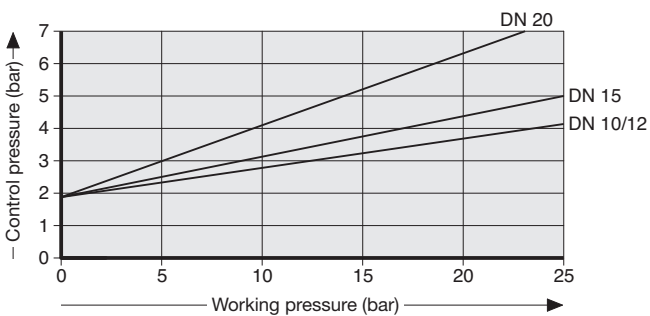
Butt Weld End [mm]

Valve Body Material Forged Body 1.4435 (Code 77)

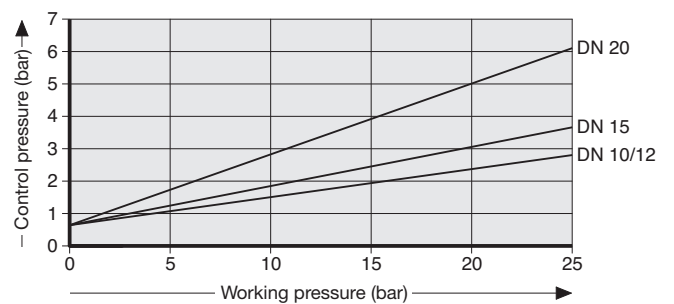
Connection Code										
	DIN Selection Series		DIN 11850 Series 1		DIN 11850 Series 2		ASTM 269 ASME BPE		ISO 1127	
	39	41	42	45	40					
DN	ød	s	ød	s	ød	s	ød	s	ød	s
8	10	1	-	-	-	-	-	-	13,5	1,6
10	-	-	12	1	13	1,5	9,53	0,89	-	-
15	-	-	-	-	-	-	12,7	1,65	-	-

Weight 0,7 kg, preferential standards in bold

Actuator 43 (NO), flow below the seat



Actuator 43 (DA), flow below the seat



Working pressure normally closed (Cf. 1), flow below the seat as well as Working terms, see table page 90. All pressures are gauge pressures.