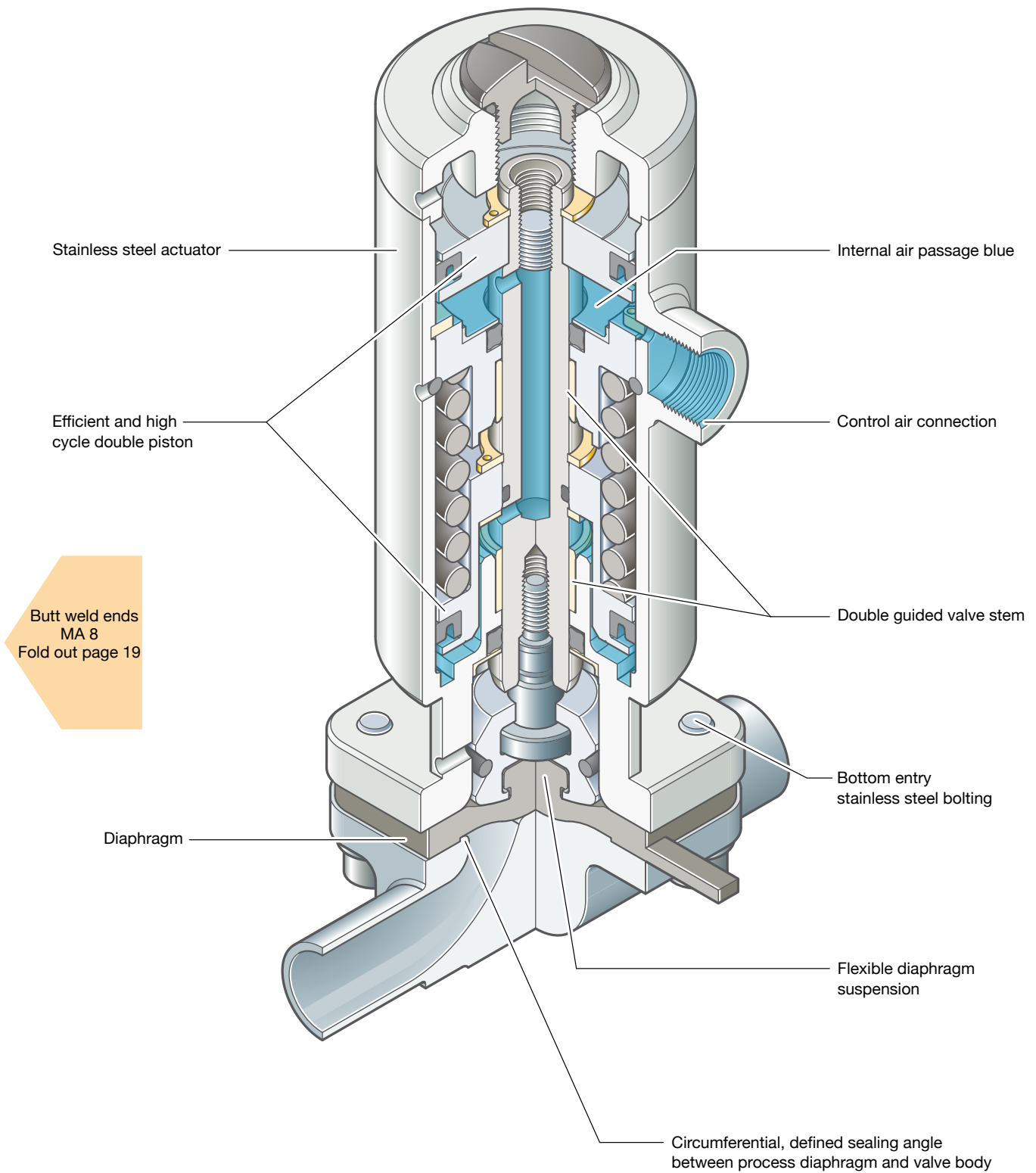


Steripur 207

Pneumatically Operated Valve DN 4 - 15 mm (1/4" - 1/2")



Sectional drawing shows Steripur 207.30

Steripur 207

Pneumatically Operated Valve DN 4 - 15 mm (1/4" - 1/2")



207.30 Cf. 4



207.25 Cf. 4, 5 & 6

This valve is available in two different designs.

The type 207.30 is available in the control function fail safe close and performs at a higher working pressure for standard application. The type 207.25 in control function fail safe close is mainly designed for filling applications or all other where the working pressure is lower. One advantages of this design are a longer diaphragm life time because there spring force is less. Other advantages of this design are a very high cycle life and a smaller overall dimensional height. Type 207.25 is also available in control functions fail safe open and double acting for standard working pressures.

Features

- **High cycle stainless steel piston actuator**
- Type 207.30 with double piston
- Compact design, the outside diameter of the actuator is the same size as the bonnet flange connecting diaphragm and body
- Advantages in multiport bodies and manifold valve assemblies
- Low control air volume, high switching speed
- High repeatability
- Control air connection on the top, away from the process product line
- Direction of control air connection is mountable in 90° rotations
- CDSA sealing concept, see page 30
- Flexible diaphragm suspension
- Clean and polished exterior design ideal for sterile wash downs

Optional

- Available with a wide range of control equipment and accessories see page 102 to 108 for this options
- Autoclavable

Technical Data

Control function (Cf.):	Pneumatically operated
207.30:	Fail safe close (NC): Cf. 1 & 4
207.25:	Fail safe close (NC): Cf. 1 & 4
	Fail safe open (NO): Cf. 2 & 5
	Double acting (DA): Cf. 3 & 6

Direction

Control connection: At Cf. 4, 5 & 6 in flow direction, standard
At Cf. 1, 2 & 3, 90° to flow direction

Max. working pressure: Unidirectional (delta p = 100%)

207.30:	Cf: Fail safe close	EPDM diaphragm 8 bar (115 psi)	PTFE diaphragm 7 bar (100 psi)
207.25:	Cf: Fail safe close	EPDM diaphragm 4,5 bar (65 psi)	PTFE diaphragm 3,5 bar (60 psi)
	Cf: Fail safe open and double acting	EPDM diaphragm 8 bar (115 psi)	PTFE diaphragm 7 bar (100 psi)

Higher working pressure may be achieved with different actuator. Please consult a SED factory representative for working pressure above the indicated maximum.

Max. working temperature: 160°C (320°F) dependent on application
Control pressure:

207.30:	Cf. 1 & 4	4 - 7 bar (60 - 100 psi)
207.25:	Cf. 1 & 4	5,5 - 7 bar (80 - 100 psi)
	Cf. 2, 3, 5 & 6	5,5 - 7 bar (80 - 100 psi)

Diaphragm material: EPDM or PTFE

Valve body material: Forged 1.4435/ 316 L ASME/BPE
Investment cast 1.4435/ 316 L
Other alloys

End connection: Butt weld ends see fold out page 19
Clamps and flanges see page 20 and 21
Special ends

Actuators suitable for: Two-Way bodies, Welded configurations, T-bodies, Multiport bodies, Tank bottom bodies

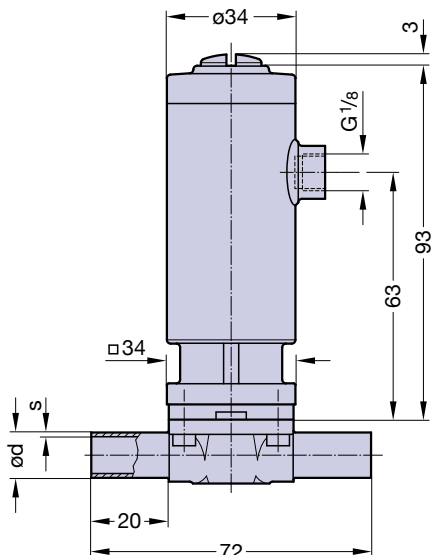
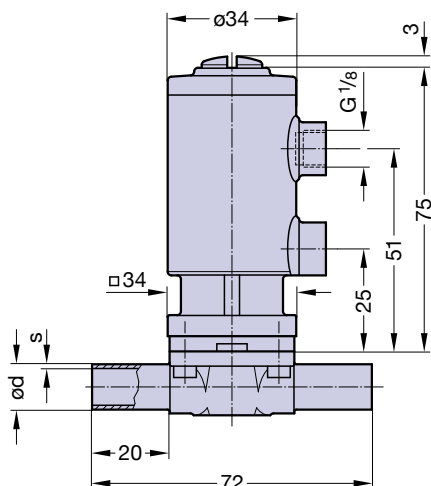
Flow rate: Kv in m³/h (Cv in GPM) see page 9

Diaphragm size: MA 8

Weight: 207.30: ca. 0,45 kg
207.25: ca. 0,44 kg

Technical data also valid for multiport valve.

Butt weld ends
MA 8
Fold out page 19



Ordering key see page 56.