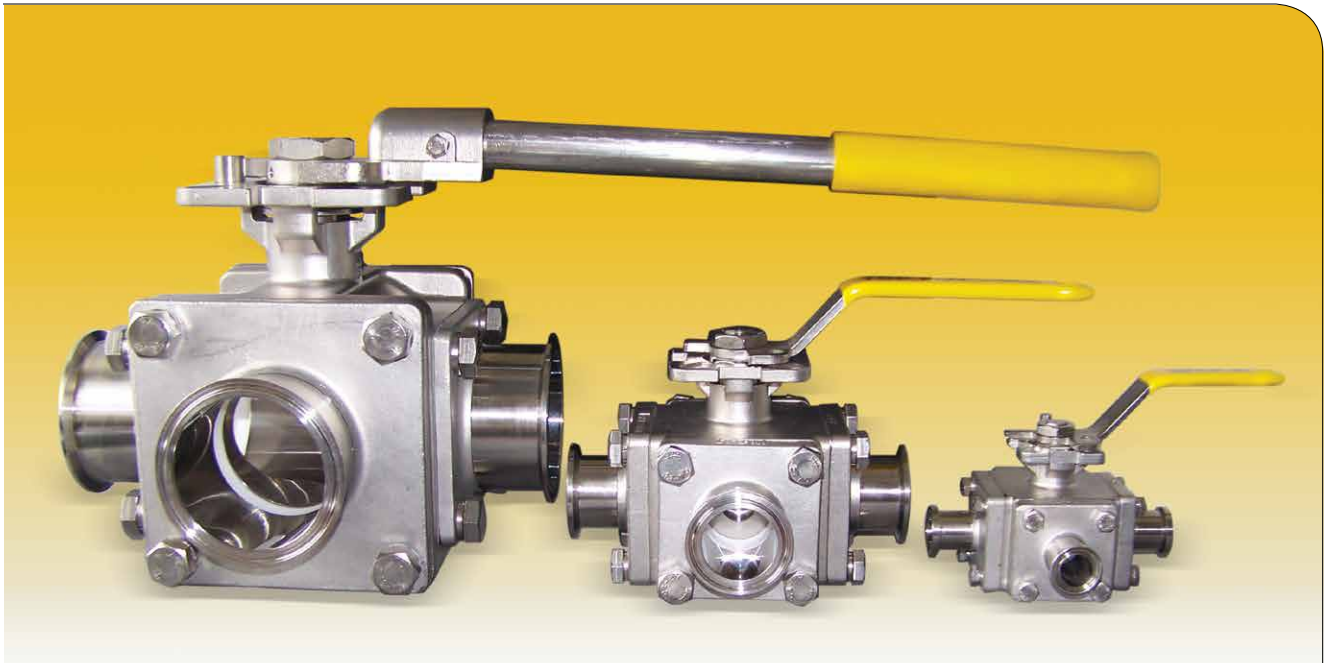




TOP-FLO[®] 3-Way Ball Valves



Advanced Automation Solution
For High Purity Industries

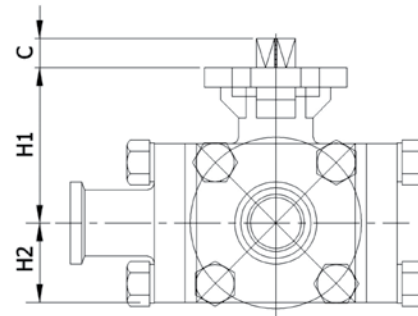
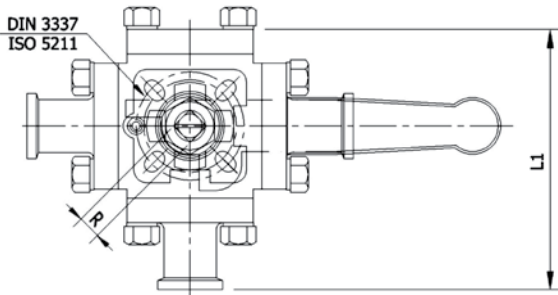
www.toplineonline.com



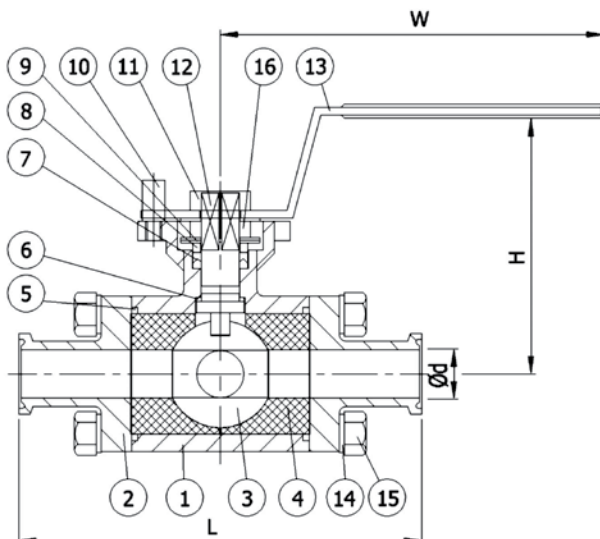
Features & Benefits

- Meets 3A, FDA, USDA requirements
- PTFE Cavity Filler, fully encapsulated
- Locking device handle
- ISO-5211 direct mounting pad standard on all valves. Eliminates the need for brackets and couplers
- 1000wog (.5-2") 800WOG (2.5-4")
- Investment cast stainless steel CF8M
- Repair kits are available
- Surface finish ID: 25-30Ra
- Standard with clamp ends, other ends available
- Ball: T-Port or L-Port
- Sizes: 1/2" -4"

Dimensions

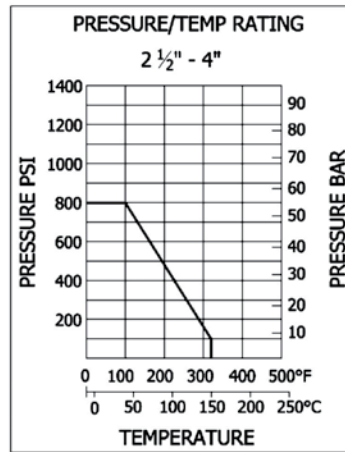
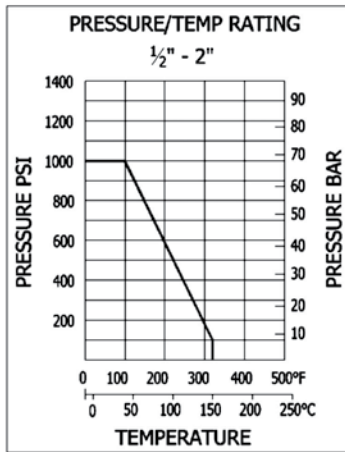
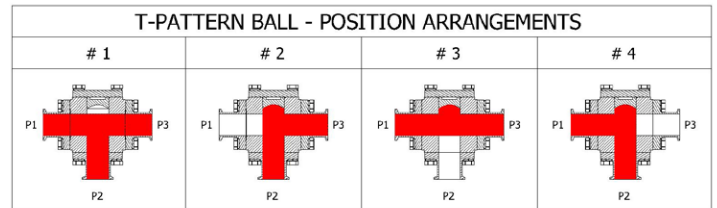
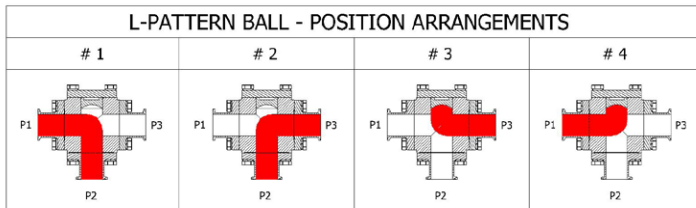
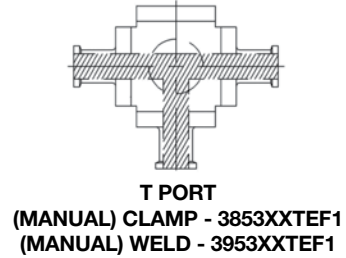
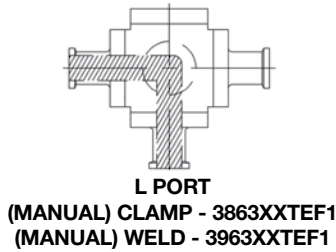


| DIMENSION (INCHES) | | | | | | | | | | | | |
|--------------------|-----|-----------|------|------|------|------|-------|------|------|------|------------|------------------|
| SIZE | DN | ISO-5211 | W | H | H1 | C | L | Ød | L1 | H2 | R | TORQUE IN/LBS |
| 1/2" | 15 | F03 / F04 | 4.76 | 3.11 | 1.75 | 0.35 | 4.65 | 0.37 | 3.59 | 0.93 | 0.35(9MM) | 40 |
| 3/4" | 20 | F03 / F04 | 4.76 | 3.25 | 1.89 | 0.35 | 5.00 | 0.62 | 3.86 | 1.02 | 0.35(9MM) | 52 |
| 1" | 25 | F04 / F05 | 5.39 | 3.58 | 2.32 | 0.43 | 6.01 | 0.87 | 4.62 | 1.20 | 0.43(11MM) | 104 |
| 1-1/2" | 40 | F05 / F07 | 7.17 | 4.21 | 2.83 | 0.55 | 6.89 | 1.37 | 5.47 | 1.57 | 0.55(14MM) | 162 |
| 2" | 50 | F05 / F07 | 7.17 | 4.61 | 3.23 | 0.55 | 7.48 | 1.87 | 6.29 | 1.97 | 0.55(14MM) | 231 |
| 2-1/2" | 65 | F07 / F10 | 14.6 | 4.27 | 3.94 | 0.67 | 8.98 | 2.37 | 6.88 | 2.45 | 0.67(17MM) | 576 |
| 3" | 80 | F10 / F12 | 15.8 | 5.28 | 4.94 | 0.91 | 10.24 | 2.87 | 7.96 | 2.91 | 0.87(22MM) | 944 |
| 4" | 100 | F10 / F12 | 15.8 | 5.67 | 5.33 | 0.91 | 12.52 | 3.83 | - | 3.31 | 0.87(22MM) | 1151 |



| MATERIAL OF CONSTRUCTION | | | |
|--------------------------|---------------|-----------|-----|
| ITEM | PARTS | MATERIAL | QTY |
| 1 | BODY | A351-CF8M | 1 |
| 2 | CAP | A351-CF8M | 4 |
| 3 | BALL | A351-CF8M | 1 |
| 4 | SEAT | PTFE | 4 |
| 5 | GASKET | PTFE | 2 |
| 6 | THRUST WASHER | PTFE | 1 |
| 7 | STEM PACKING | PTFE | 1 |
| 8 | RING | AISI 316 | 1 |
| 9 | BEVEL WASHER | AISI 301 | 2 |
| 10 | STOP PIN | AISI 316 | 1 |
| 11 | NUT | AISI 304 | 1 |
| 12 | STEM | AISI 316 | 1 |
| 13 | HANDLE | AISI 304 | 1 |
| 14 | SPRING WASHER | AISI 304 | 16 |
| 15 | BOLT | AISI 304 | 16 |
| 16 | SPACER | AISI 304 | 1 |

TECHNICAL INFORMATION



ORDERING INFORMATION

Automated Part Number Matrix

| MATERIAL | END CONNECTIONS | VALVE SERIES | POSITION CODE | SIZE | SEAT MATERIAL | AUTOMATION TYPE | | | | | | |
|----------|-----------------|--------------|---------------|-----------------|---------------|----------------------------------|----|--------|---|--------------------------|----|-------------------------------|
| 3 | 8 | TC X TC X TC | 5 | T-PATTERN 3-WAY | A1* | #1 - REST / #2 - AUTO (CCW TURN) | 05 | 1/2" | P | CAVITY FILLED PTFE SEATS | A1 | DOUBLE ACTING - 80 PSI SUPPLY |
| | | | | | | #2 - REST / #3 - AUTO (CCW TURN) | 07 | 3/4" | | | A2 | DOUBLE ACTING - 60 PSI SUPPLY |
| | 9 | BW X BW X BW | 6 | L-PATTERN 3-WAY | B1 | #3 - REST / #4 - AUTO (CCW TURN) | 10 | 1" | | | S1 | SPRING RETURN - 80 PSI SUPPLY |
| | | | | | | #4 - REST / #1 - AUTO (CCW TURN) | 15 | 1 1/2" | | | S2 | SPRING RETURN - 60 PSI SUPPLY |
| | | | | | | #1 - REST / #4 - AUTO (CW TURN) | 20 | 2" | | | E1 | 115VAC - 1PH, NEMA 4,4X,6 |
| | | | | | | #2 - REST / #1 - AUTO (CW TURN) | 25 | 2 1/2" | | | E2 | 24VDC, NEMA 4,4X,6 |
| | | | | | | #3 - REST / #2 - AUTO (CW TURN) | 30 | 3" | | | E3 | 220VAC - 1PH, NEMA 4,4X,6 |
| | | | | | | #4 - REST / #3 - AUTO (CW TURN) | 40 | 4" | | | | |

PART NUMBER EXAMPLE: 385D115PS2

(316SS CLAMP, T-PATTERN 3-WAY TOP-FLO® SANITARY BALL VALVE, D1 POSITION, 1 1/2", CAVITY FILLED PTFE SEATS, SPRING RETURN)

* POSITION CODES A1 & F2 ARE STANDARD ARRANGEMENTS FOR VALVE SERIES 6 (L-PATTERN 3-WAY) ALTERNATIVE POSITIONS & 180° AUTOMATION UPON REQUEST

TOP LINE

PROCESS EQUIPMENT COMPANY

. . . the source for
all your product needs
in the process industries

Contact your Top Line Representative for Assistance

Office: P.O. Box 264 · Bradford, PA 16701

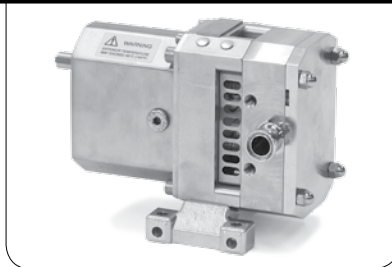
Plant: 21 Valley Hunt Drive · Lewis Run, PA 16738

800-458-6095

814-362-4626

Fax: 814-362-4453

PUMPS & STRAINERS- Centrifugal, Rotary Lobe, Filters and Strainers



VALVES - Manual, Actuated, Diaphragm



FITTINGS - Clamp, Sanitary Butt-Weld, Bevel Seat, Tube OD Butt-Weld, Custom, Biopharm



TUBING, GAUGES, SIGHT GLASSES, BRAIDED HOSE



www.toplineonline.com