



FITTING INSTRUCTIONS

PRESSURE/VACUUM VALVE

www.definox.com

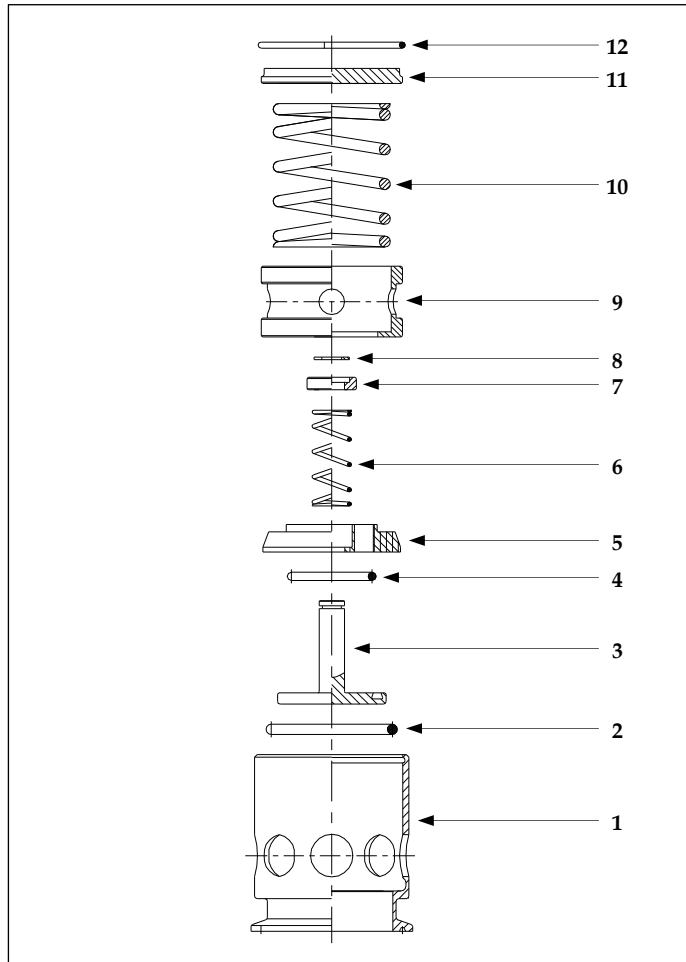
DEFINOX SAS
3 Rue des Papetiers - Z.A.C. de Tabari 2
44190 Clisson - France

☎ : +33 (0)2 28 03 98 50

📠 : +33 (0)2 28 03 88 00

E-mail : info@definox.com

PRESSURE/VACUUM VALVE



- 1 : Body
- 2 : Seal
- 3 : Vacuum piston
- 4 : Seal
- 5 : Seat
- 6 : Spring
- 7 : Washer
- 8 : Locking washer
- 9 : Spring guide
- 10 : Spring
- 11 : Cap
- 12 : Snap ring

Follow the fitting and operating instructions carefully. Take account of the actual working conditions and comply with the valve specifications indicated in the DEFINOX catalogue.

VALVE IDENTIFICATION

DEFINOX vacuum pressure relief valves have a label with an individual number of the valve, its pressure strength (Pres) and its vacuum strength (Vac). This information will be useful later to identify any spare parts you may require.

POSSIBLE SEAL TYPES

The following seal types can be mounted on your valve:
SILICONE

Please contact our Technical Department to define the seal type suited to your process.

PRESSURE/VACUUM VALVE INSTALLATION

Store your valve in its original packaging to prevent damage. Position the valve on the process line and tighten the nut or fasten the clamp according to the fastening system selected.

CALIBRATION RANGE

Vacuum: 30 mb
Pressure: 0.2 to 2.8 bar (depending on model)

EEC CONFORMITY

The DEFINOX vacuum pressure relief valves have not to be integrated into devices subjected to the regulation 97/23/CE "Devices under pressure". The integrator has responsibility for checking that the installation in which our relief valves are integrated, comply with the applicable legislation and regulations.

SPARE PARTS AND ACCESSORIES

Refer to the general documentation or consult us.

Please consult us in the event of a malfunction.