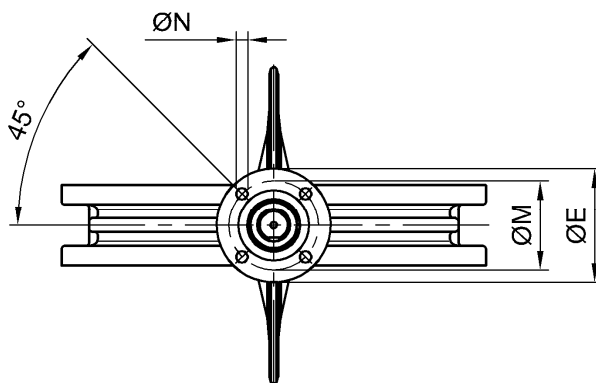
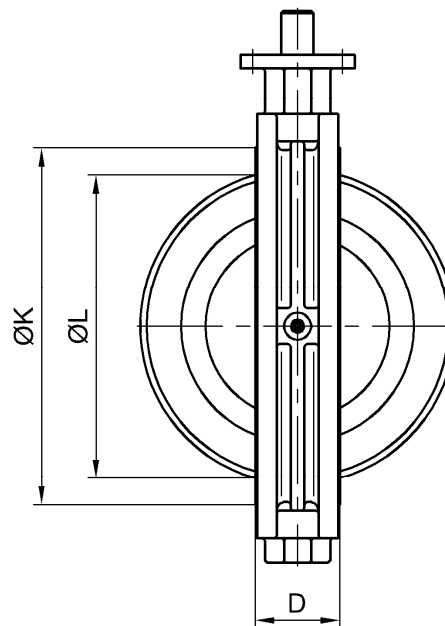
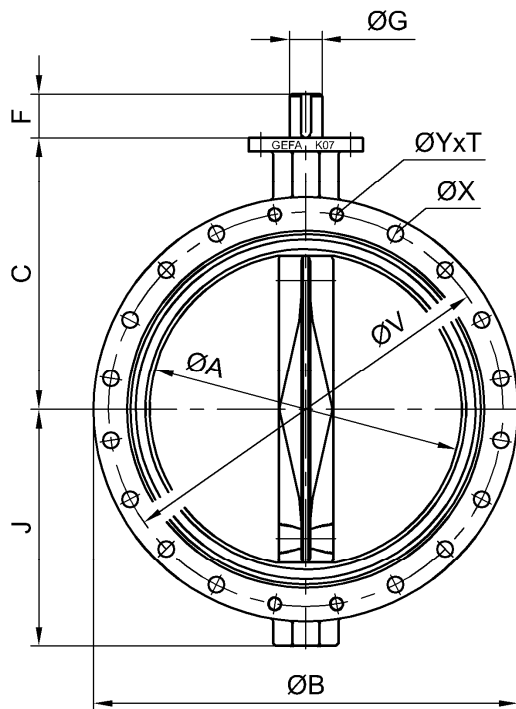


Kopfflansch: ISO 5211

Mounting plate: ISO 5211



ØK = Sitzring-Außendurchmesser
 Seat outside diameter

ØL = kleinster Flanschinwenddurchmesser
 smallest inside diameter of flange

DN	NPS	ØA	ØB	C	D	ØE	F	ØG	J	ØK	ØL	Passfeder Key DIN 6885	Kopfflansch Mounting plate			kg
													ØM	ØN	ISO 5211	
600	24"	580	810	500	149	210	80	60	435	657	566	18 x 11	165	4 x Ø22	F16	225
700	28"	680	925	550	169	210	80	60	485	762	663	18 x 11	165	4 x Ø22	F16	335

DN	NPS	Druckstufe / Pressure class 150 lb / sq. in.			
		ØV	ØX	ØY	T
600	24"	749,3	16 x Ø35	4 x 1 1/4"-8UN	40
700	28"	863,6	24 x Ø35	4 x 1 1/4"-8UN	40

Maximale Druckbelastung: siehe Druck-Temperatur-Diagramm

Maximum pressure: please refer to pressure-temp. range diagram

Änderungen vorbehalten
 subject to changes