

KNIFE GATE VALVE XV



Knife gate valve for liquids with high solids content up to 8%.

TECHNICAL DATA

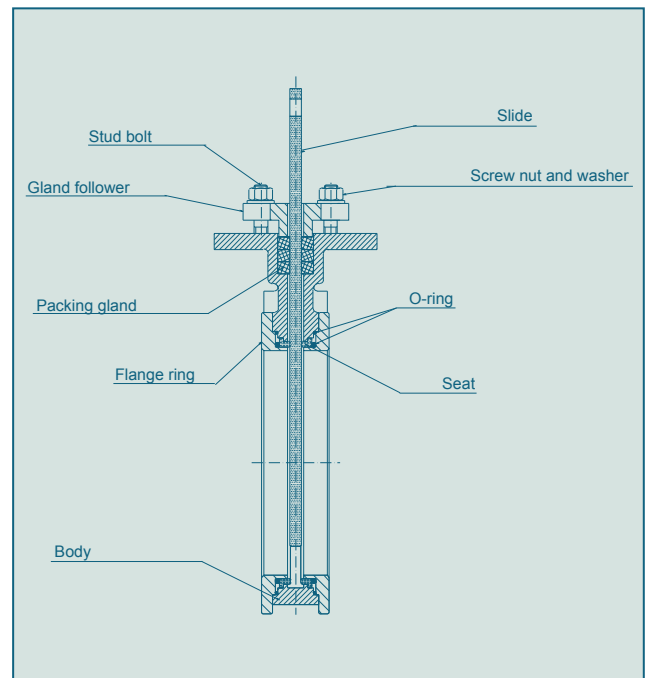
| | |
|------------------------|---|
| Nominal diameter: | 3 inch - 32 inch |
| Face-to-face: | 3 inch - 12 inch EN 558 Series 20 14 inch - 32 inch works standard |
| Flange Surface Design: | EN 1092 PN 10 ASME Class 150 |
| Marking: | EN 19 |
| Tightness check: | EN 12266 (Leakage rate A) ISO 5208 Class A |
| Temperature range: | max. +356°F |
| Actuators: | Hand wheel, chain wheel, ratched wrench, pneumatic cylinder, electric motor, hydraulic cylinder |
| Operating pressure: | 3 inch - 14 inch: 145 psi 16 inch - 24 inch: 87 psi D28 inch - 32 inch: 58 psi |

FEATURES

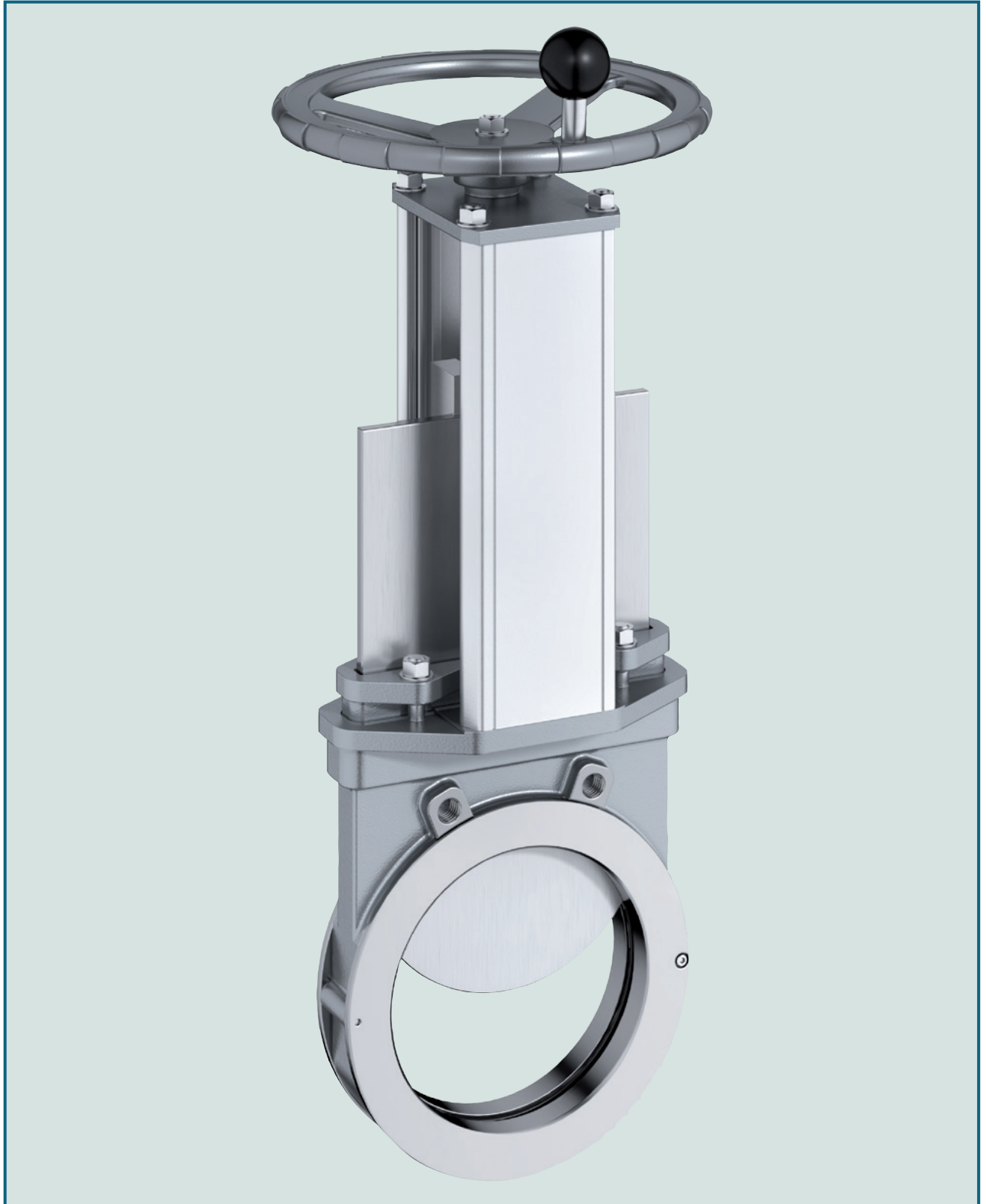
- Box packing TwinPack™ gives high operation reliability
- One side lugging, bi-directional sealing
- Easy replacement of seat by mechanically locked retainer ring
- Low-maintenance
- High resistance against water hammer
- Great differential pressure possible

GENERAL APPLICATIONS

- Process technology
- Pulp and paper
- Granulates, bulk solids and powder



KNIFE GATE



Knife gate valve for liquids with high solids content up to 8%.

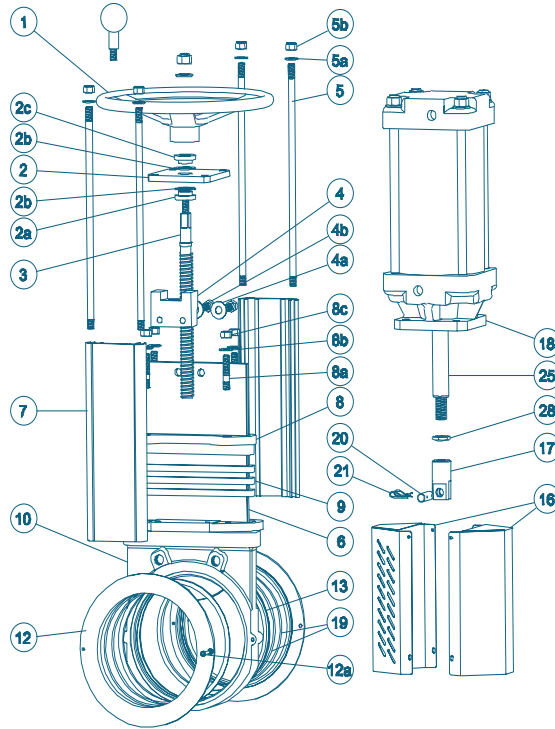
E VALVE XV

TECHNICAL DATA

| | |
|------------------------|---|
| Nominal diameter: | 3 inch - 32 inch |
| Face-to-face: | 3 inch - 12 inch EN 558 Series 20 14 inch - 32 inch works standard |
| Flange Surface Design: | EN 1092 PN 10 ASME Class 150 |
| Marking: | EN 19 |
| Tightness check: | EN 12266 (Leakage rate A) ISO 5208 Class A |
| Temperature range: | max. +356°F |
| Actuators: | Hand wheel, chain wheel, ratched wrench, pneumatic cylinder, electric motor, hydraulic cylinder |
| Operating pressure: | 3 inch - 14 inch: 145 psi 16 inch - 24 inch: 87 psi D28 inch - 32 inch: 58 psi |

KNIFE GATE VALVE XV

MATERIAL SPEZIFICATION AND PARTS LIST



| Pt. | Description | Material | Material-No. | ASTM | Pt. | Description | Material | Material-No. | ASTM |
|-----|------------------|---------------|--------------|----------|-----|------------------------|----------------|--------------|------|
| 1 | Hand wheel | | | | 8a | Stud bolt | | | |
| | Aluminium | AlSi9Cu3(Fe) | | | | A2, zinc | X5CrNi18 M 10 | 1.4301 | |
| | >12 in Cast Iron | GG 20 | 0.6020 | A48No30B | 8b | Washer | | | |
| 2 | Yoke | | | | | Stainless Steel | X5CrNi18 M 10 | 1.4301 | |
| | Stainless Steel | X5CrNi18 M 10 | 1.4301 | | 8c | Nut | | | |
| 2a | Bearing | | | | | A2, zinc | X5CrNi18 M 10 | 1.4301 | |
| | Brass | CuZn39Pb3 | | C 36000 | 9 | Box packing * | | | |
| 2b | Slide washer | | | | | Twin Pack™ | | | |
| | POM | | | | 10 | Valve body | | | |
| 2c | Bearing | | | | | Stainless Steel | | 1.4408 | |
| | Brass | CuZn39Pb3 | | C 36000 | 12 | Retainer ring | | | |
| 3 | Stem | | | | | Stainless Steel | | 1.4408 | |
| | Stainless Steel | X6Cr17 | 1.4016 | | 12a | Locking screw | | | |
| | >10 in | X12CrMoS17 | 1.4104 | | | Stainless Steel | X5CrNi18 M 10 | 1.4301 | |
| 4 | Stem nut | | | | 13 | Seat * | | | |
| | Brass | CuZn39Pb3 | | C 36000 | | PTFE | | | |
| 4a | Washer | | | | 16 | Gate guard, not for HW | | | |
| | Stainless Steel | X5CrNi18 M 10 | 1.4301 | | | Stainless Steel | X5CrNi18 M 10 | 1.4301 | |
| 4b | Screw | | | | 17 | Gate clevis | | | |
| | Stainless Steel | X5CrNi18 M 10 | 1.4301 | | | Stainless Steel | X10CrNi18 M 10 | 1.4305 | |
| 5 | Tie rod | | | | 18 | Cylinder | | | |
| | Stainless Steel | X5CrNi18 M 10 | 1.4301 | | | See data sheet | | | |
| 5a | Washer | | | | 19 | O-ring | | | |
| | Stainless Steel | X5CrNi18 M 10 | 1.4301 | | | FPM | | | |
| 5b | Nut | | | | 20 | Clevis pin | | | |
| | Stainless Steel | X5CrNi18 M 10 | 1.4301 | | | Stainless Steel | X10CrNi18-9 | 1.4305 | |
| 6 | Gate | | | | 21 | Split pin | | | |
| | Stainless Steel | | 1.4401 | | | Stainless Steel | | | |
| 7 | Beam | | | | 25 | Piston rod | | | |
| | Aluminium | AlMnAlSi0,5 | | AA 6063 | | Stainless Steel | X12CrMoS17 | 1.4104 | |
| 8 | Gland | | | | 28 | Locking nut | | | |
| | Stainless Steel | | | | | Stainless Steel | X10CrNi18-9 | 1.4305 | |

* Recommended spare parts

Subject to change without notice